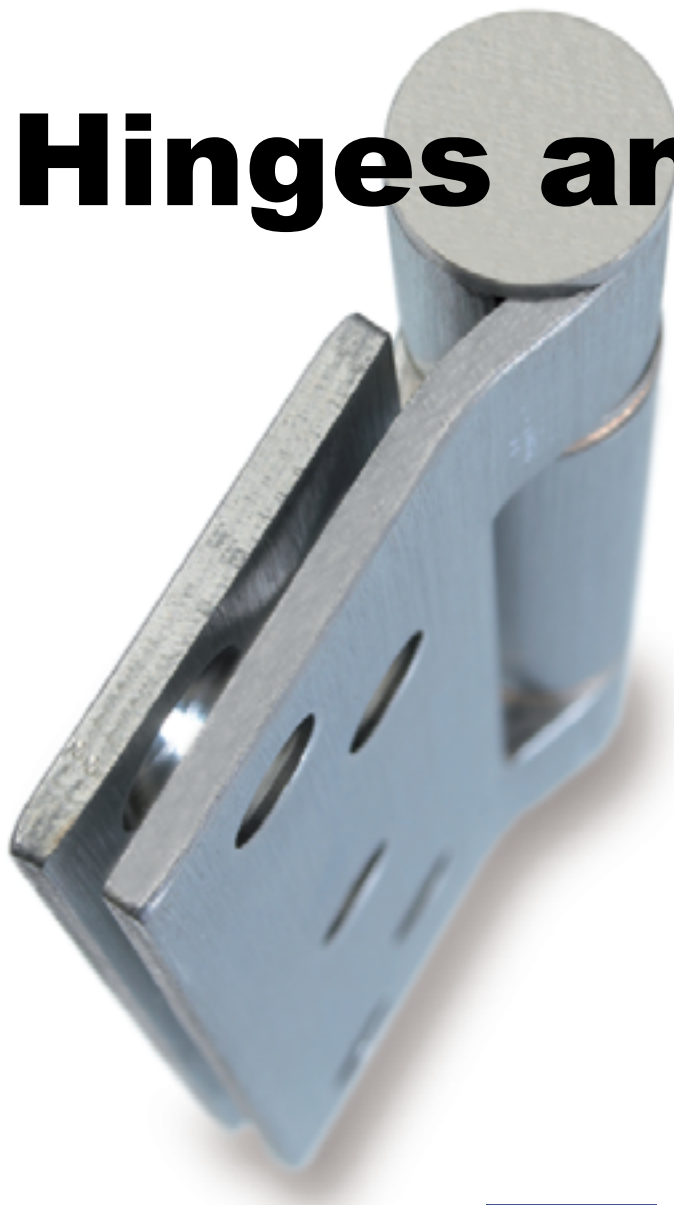




# Architectural Ironmongery Catalogue

## Chapter 1

# Hinges and Pivots



W T Lynn Ltd

Pitt Street East  
Stoke on Trent  
England  
ST6 2AX  
UK

01782 834818





Certifire is a voluntary, independent third party certification scheme that assures performance, reliability and traceability of fire protection products.

The Certifire logo next to a product in this catalogue indicates that it is accredited under the scheme. A product does **not** have to be certified by Certifire to be used on fire doors.



This symbol indicates that the hinge is CE marked under EN1935. CE marking is compulsory for products with a harmonised European Standard which are to be fitted to fire and/or smoke resisting doors, and escape doors. In general all of our commercial hinges are CE marked.



This symbol denotes a product that has been successfully tested to EN1634-1:2008 for use on 30 minute fire and smoke doors.

Please be aware that certain products will require the use of an additional intumescent product if fitted to a 30 minute fire door. Most of our hinges do **not** require these additional products for 30 minute fire and smoke resistance. Please request this information as necessary.



This symbol denotes a product that has been successfully tested to EN1634-1:2008 for use on 60 minute fire and smoke doors. It is **not** implicit that a 60 minute rated product has been tested as suitable for use on a 30 minute fire door, the 30 and 60 minute tests are carried out independently of one another.

Please be aware that certain products will require the use of an additional intumescent product if fitted to a 60 minute fire door. Most hinges **do** require these additional products for 60 minute fire resistance. Please request this information as necessary.



This symbol indicates that the product can assist in reconciling the maximum permissible opening forces for a door, as prescribed by Approved Document M, with the minimum closing forces required by Approved Document B.

This symbol also denotes a product that would constitute a “reasonable adjustment” in order to prevent discrimination as described by the Equality Act 2010.



This symbol indicates the length of time (in years) that the product is guaranteed for as standard.

The guarantee extends mechanically to the product being used in an environment equal to, or less demanding than, that described in the first paragraph of the product’s description, and its weight carrying capacity not being exceeded (see opposite page).

The guarantee extends to the aesthetics and corrosion resistance of the hinge commensurate with the grade of material used meeting the guidelines indicated on page 6.



This symbol gives the maximum **adjusted** door weight that can be carried by three hinges on a door of less than 2250mm height.

If fewer than three hinges are required this will be indicated in the product description, however, fire resisting doors must always have more than two hinges fitted. If the door is between 2250mm and 3000mm then four hinges should be used.

**Adjusting The Door’s Mass**

Step 1. Add the weight of the door and ironmongery together to get the **Base Mass**.

Step 2. Increase the **Base Mass** by an accumulation of the following percentages to achieve the **Duty Mass**.

Non-backcheck door closer fitted	+20%
Backcheck door closer fitted	+75%
Subject to wind forces	+10%
Subject to violence	+10%

Example.

The door and its glazing weighs 50kg and the ironmongery weighs 5kg.

$50\text{kg} + 5\text{kg} = 55\text{kg}$

**Base Mass = 55kg.**

The door has a backcheck door closer and is subject to wind forces.  $75\% + 10\% = 85\%$

$55\text{kg} + 85\% = 55\text{kg} + 46.75\text{kg} = 101.75\text{kg}$

**Duty Mass = 101.75kg**

If the door is less than 1000mm wide no further adjustment is necessary and the Duty Mass is the door’s **Adjusted Mass**, and is used to determine the hinge grade.

If the door is over 1000mm wide then a further adjustment is necessary to the Duty Mass.

1000 - 1050mm	+10%
1050 - 1100mm	+18%
1100 - 1150mm	+26%
1150 - 1200mm	+33%
1200 - 1250mm	+40%

Example, the Duty Mass is 101.75kg, the door is 1140mm wide.

$101.75\text{kg} + 26\% = 101.75\text{kg} + 26.45\text{kg} = 128.20\text{kg}$

The example door’s **Adjusted Mass** is **128.20kg**.



The string of boxes above relates to a hinge’s performance in tests to achieve it’s classification under EN1935. Where these boxes are shown on a product page it indicates the following statement of conformity from the manufacturer.

*“This product has been successfully type-tested for conformity to all the requirements of EN1935. Test reports and certificates are available upon request. Regular audit testing is undertaken.”*

This is the wording required by the standard EN1935, and it is a stronger wording than “tested to”, “designed to conform to”, “conforms to” or “approved to”. Such weak statements of conformity are usually an indication of an untested product. Where the string of boxes is shown on a product page it indicates, and can be taken as meaning, a **proper statement of conformity** as prescribed.

The outcome of the various tests required by EN1935 are indicated by the numbers inside each box, with each box relating to an aspect of the hinge’s performance.

**Digit 1**  
**Category of use.** Four categories of use are identified:

- grade 1: light duty
- grade 2: medium duty
- grade 3: heavy duty
- grade 4: severe duty

**Digit 2**  
**Durability.** Three grades are identified for single-axis hinges manufactured to this European standard, only two are applicable to pedestrian doors:

- grade 3: 10 000 test cycles, for light duty hinges on windows only.
- grade 4: 25 000 test cycles, for light duty hinges on windows and doors.
- grade 7: 200 000 test cycles, for medium. heavy and severe duty hinges on doors.

**Digit 3**  
**Test door mass.** Eight door mass grades related to single-axis hinges are identified in this European standard as shown below.

- |   |        |
|---|--------|
| 1 | 10 kg  |
| 2 | 20 kg  |
| 3 | 40 kg  |
| 4 | 60 kg  |
| 5 | 80 kg  |
| 6 | 100 kg |
| 7 | 120 kg |
| 8 | 160 kg |

**Digit 4**  
**Suitability for fire/smoke door use.** Two grades of suitability are identified for single-axis hinges:

- grade 0: not suitable for fire/smoke resistant door assemblies
- grade 1: suitable for fire/smoke resistant door assemblies subject to satisfactory assessment of the contribution of the single-axis hinge to the fire resistance of the specified fire/smoke door assemblies. Such assessment is beyond the scope of this European standard (see EN 1634-1).

**Digit 5**  
**Safety**  
Single-axis hinges are required to satisfy the essential requirements of safety in use. Therefore, only grade 1 is identified.

**Digit 6**  
**Corrosion resistance.** Five grades of corrosion resistance are identified in accordance with EN1670:

- grade 0: no defined corrosion resistance.
- grade 1: mild resistance.
- grade 2: moderate resistance.
- grade 3: high resistance.
- grade 4: very high resistance.

**Digit 7**  
**Security.** Two grades of security are identified for single-axis hinges:

- grade 0: not suitable for use on burglar-resistant door assemblies
- grade 1: suitable for applications requiring a degree of security.

**Digit 8**  
**Hinge grade.** Fourteen grades are identified in this European standard and are detailed below.

1 Window	10 000	10 kg
2 Window	10 000	20 kg
3 Window/Door	25 000	20 kg
4 Door	200 000	20 kg
5 Window	10 000	40 kg
6 Window/Door	25 000	40 kg
7 Door	200 000	40 kg
8 Window	10 000	60 kg
9 Window/Door	25 000	60 kg
10 Door	200 000	60 kg
11 Door	200 000	80 kg
12 Door	200 000	100 kg
13 Door	200 000	120 kg
14 Door	200 000	160 kg

## Materials

The materials used in the hinge's construction is dictates it's resistance to corrosion, and therefore it's mechanical and aesthetic longevity. Below we list the commonly used materials and their uses.

**Grade 316 stainless steel.** Suitable for external coastal and marine applications, chemical plants, external doors on busy roads and other areas with very high risk of corrosion.

**Grade 304 stainless steel.** Suitable internal coastal and marine applications, and for use external-ly inland, and other areas with a high risk of corrosion.

**Plated finishes on brass.** Suitable for coastal internal use, and inland external and internal use.

**Brass.** Suitable for inland external and internal use however, will normaly tarnish.

**Grade 201 stainless steel.** Suitable for inland internal use, and other areas with a moderate risk of corrosion.

**Plated mild steel.** Suitable for inland internal use, and other areas with a moderate risk of corro-sion.



Many of our hinges have their corrosion resistance indicated in the 6th box of their EN1935 classification.

## Stainless Steel Finishes

**Satin stainless steel.** This is a brushed finish to the base metal, sometimes referred to as brushed stainless steel.

**Polished stainless steel.** This is a polished finish to the base metal, sometimes referred to as bright stainless steel.

**PVD.** This is a polished brass effect coating applied to stainless steel base metals, it has a much higher corrosion resistance than real brass.

## Handing

There is no uniform handing system for hinge products across all manufacturers. Where a hinge is handed we indicate the handing protocol, for that hinge only, with the schematic below.



## Ironmongery Scheduling

We offer a complete architectural ironmongery and lock scheduling service. All our schedules are carried out by a Dip GAI qualified Architectural Ironmonger with a Dip FD qualification in fire doors.

There are many advantages to getting is involved early on in your project with this service.





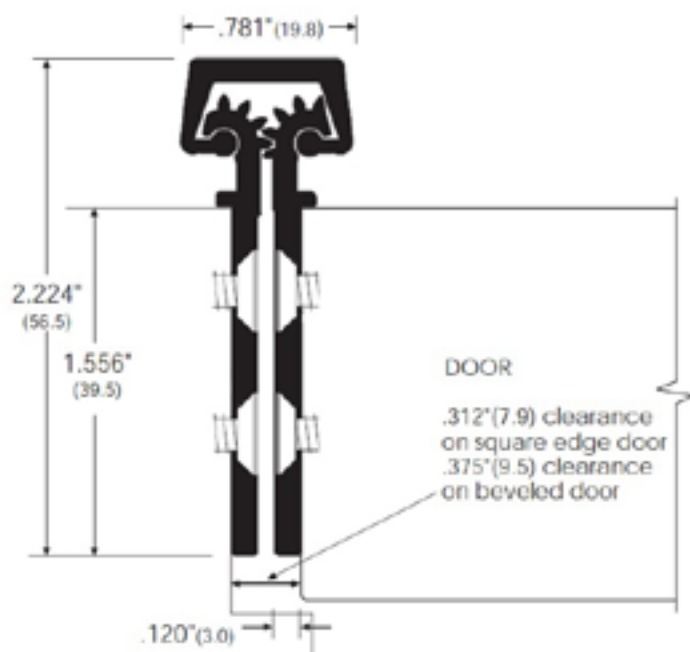
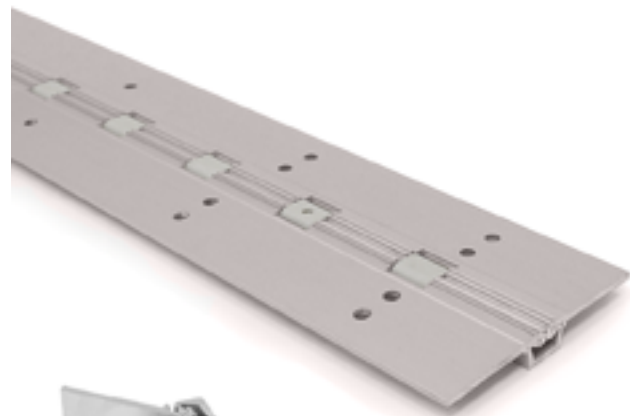
## Continuously Geared Hinge

High performance, continuously geared hinges for doors subject to a high frequency of careless use.

Self lubricating and maintenance free.

Can aid in reconciling Approved Document B with Approved Document M.

Manufactured from heavy gauge aluminium alloy and is suitable for internal and external use.



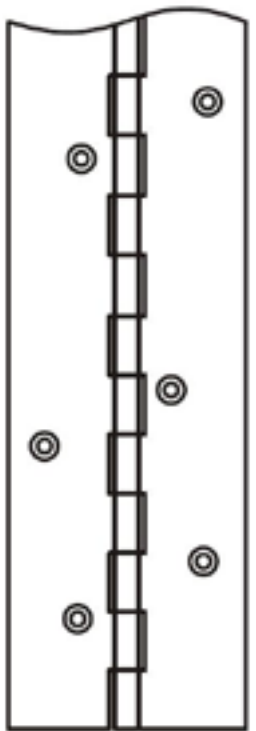
Length	Sales Unit	Prod Code
2134mm	Each	HNGR2134
2438mm		HNGR2438
2743mm		HNGR2743

## 2000 x 76 x 2.5mm Continuous Hinge

Performance continuous hinge for doors subject to frequent violent usage or that are at frequent risk of vandalism or attack.

Manufactured from grade 304 stainless steel and available in satin stainless steel finish.

For doors expected to perform under extremely arduous conditions.



\*Dog bolt version is 1.

Version	Sales Unit	Prod Code
Standard	Each	HNP76-SSS
Dog Bolt		HNP76-SEC-SSS

## Extreme Duty 125mm Butt Hinge



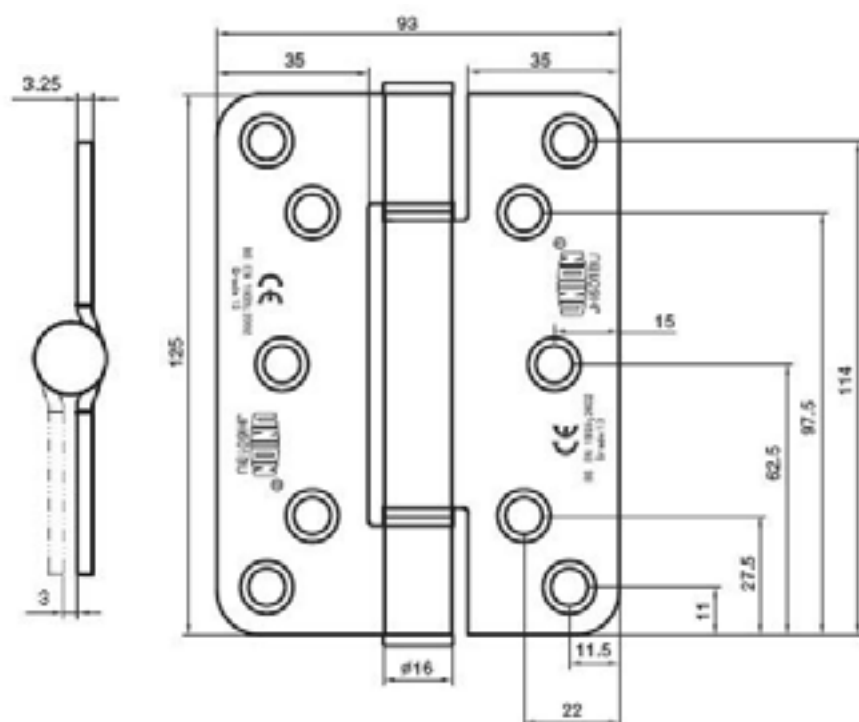
High performance, low friction butt hinges for doors subject to frequent violent usage.

Self lubricating and maintenance free.

Low friction bearing can aid in reconciling Approved Document B with Approved Document M.

Manufactured from either grade 304 satin stainless steel, or zinc plated mild steel. The zinc plated version has a brushed effect to the knuckle and is aesthetically very similar to the brushed stainless steel version. Pictured in satin stainless steel.

Available square or radius cornered, pictured with radius corners.



\*Stainless steel version, zinc plated version is 2.

Material/Finish	Corners	Sales Unit	Prod Code
Stainless Steel	Square	Each	HNS955-SSS
	Radius		HNS955-SSS-R
Zinc Plated	Square		HNS955-BZP
	Radius		HNS955-BZP-R

## Extreme Duty 125mm Projection Butt Hinge



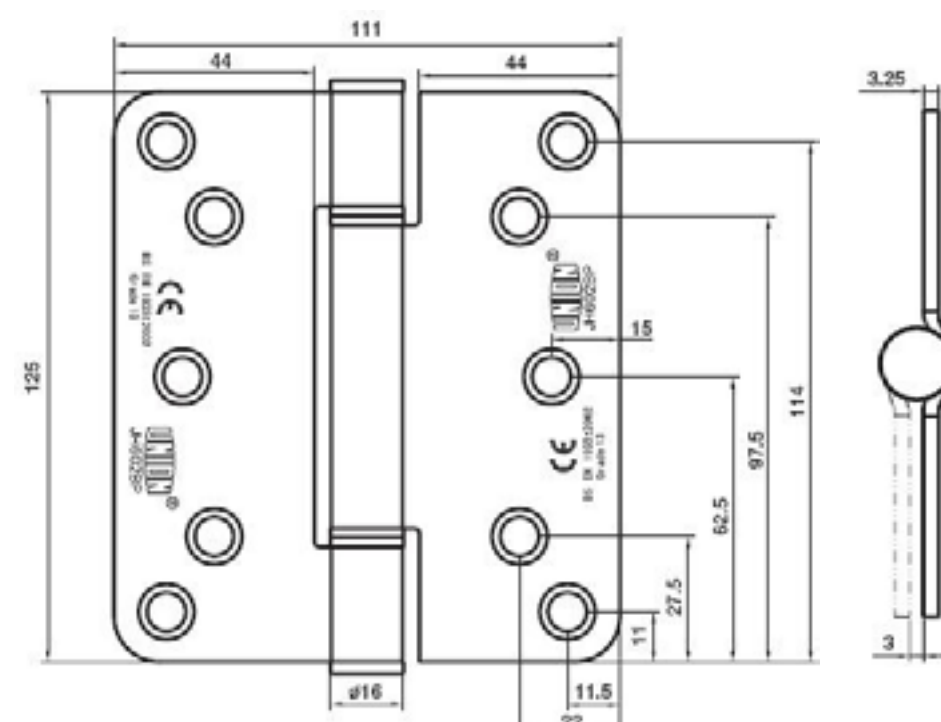
High performance, low friction, projection butt hinges for doors subject to frequent violent usage.

Self lubricating and maintenance free.

Low friction bearing can aid in reconciling Approved Document B with Approved Document M.

Manufactured from either grade 304 satin stainless steel, or zinc plated mild steel. The zinc plated version has a brushed effect to the knuckle and is aesthetically very similar to the brushed stainless steel version. Pictured in satin stainless steel.

Available square or radius cornered, pictured with radius corners.



\*Stainless steel version. Zinc plated version is 2.

Material/Finish	Corners	Sales Unit	Prod Code
Stainless Steel	Square	Each	HNS966-SSS
	Radius		HNS966-SSS-R
Zinc Plated	Square		HNS966-BZP
	Radius		HNS966-BZP-R



## Extreme Duty 100mm Butt Hinge



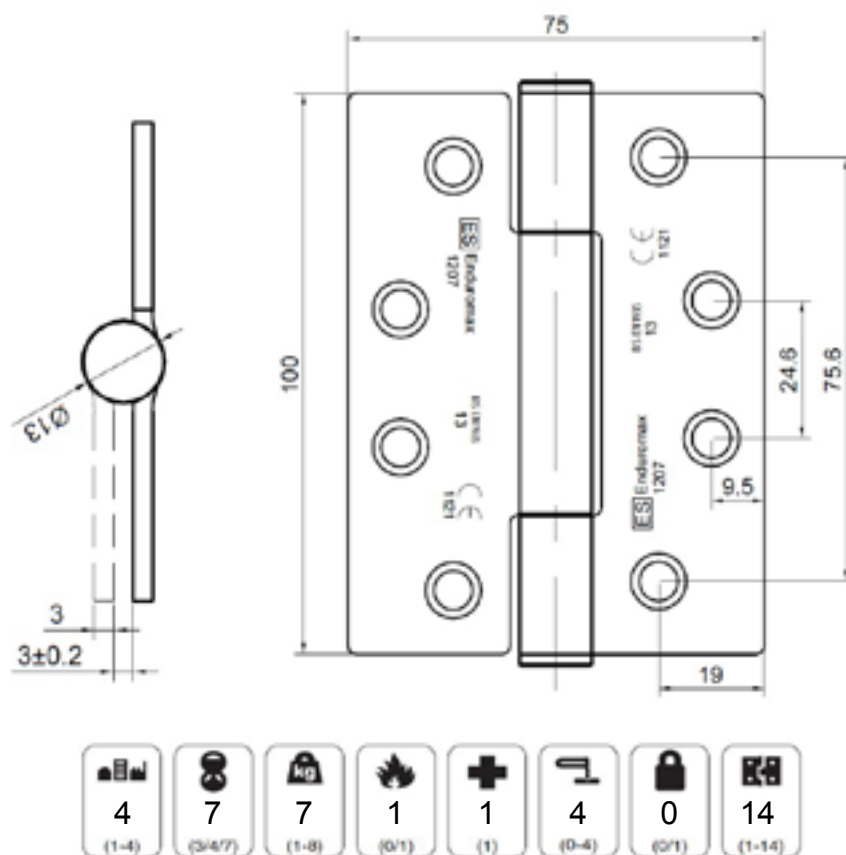
High performance butt hinges for doors subject to frequent violent usage.

Manufactured from grade 304 stainless steel and available in three finishes:-

- Satin stainless steel
- Polished stainless steel
- Polished brass effect PVD

Pictured in satin stainless steel.

Available square or radius cornered, pictured with square corners.



Finish	Corners	Sales Unit	Prod Code
Satin	Square	Pairs	HNS229-SSS
	Radius		HNS229-SSS-R
Polished	Square		HNS229-PSS
	Radius		HNS229-PSS-R
PVD	Square		HNS229-PVD
	Radius		HNS229-PVD-R

## High Performance 100mm Butt Hinge



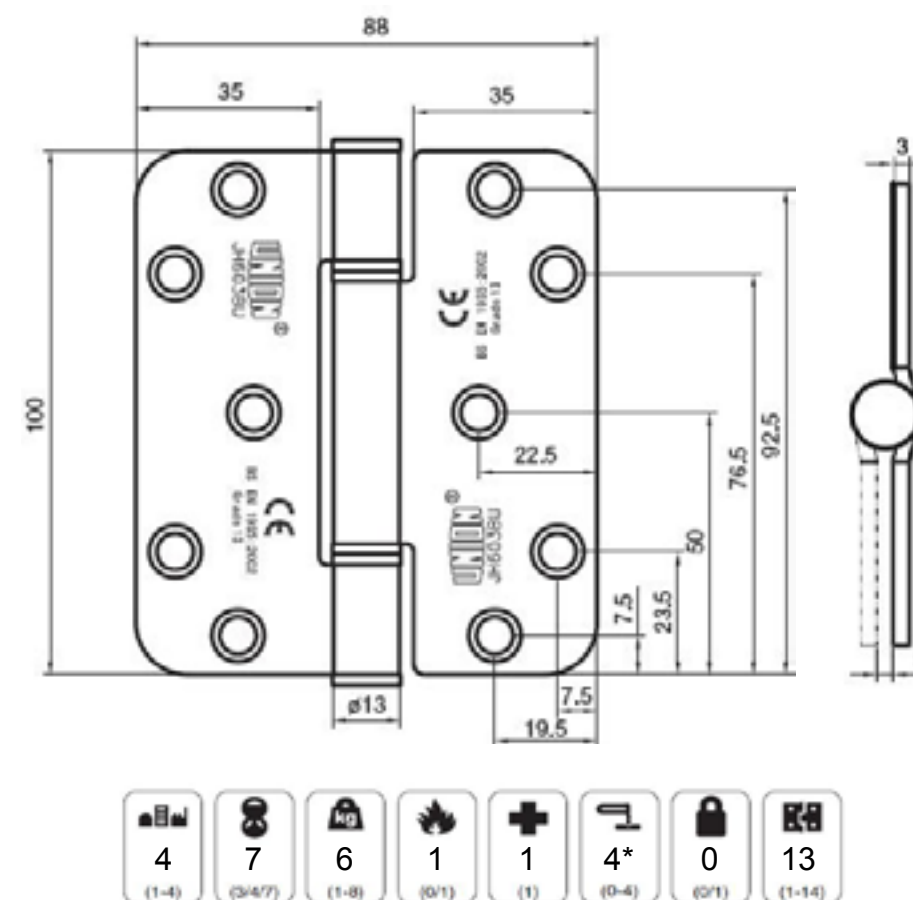
High performance, low friction butt hinges for doors subject to a high frequency of careless use.

Self lubricating and maintenance free.

Low friction bearing can aid in reconciling Approved Document B with Approved Document M.

Manufactured from either grade 304 satin stainless steel, or zinc plated mild steel. The zinc plated version has a brushed effect to the knuckle and is aesthetically very similar to the brushed stainless steel version. Pictured in satin stainless steel.

Available square or radius cornered, pictured with radius corners.



\*Stainless steel version, zinc plated version is 2.

Material/Finish	Corners	Sales Unit	Prod Code
Stainless Steel	Square	Each	HNS911-SSS
	Radius		HNS911-SSS-R
Zinc Plated	Square		HNS911-BZP
	Radius		HNS911-BZP-R

Extreme Duty Lift-Off Butt Hinge



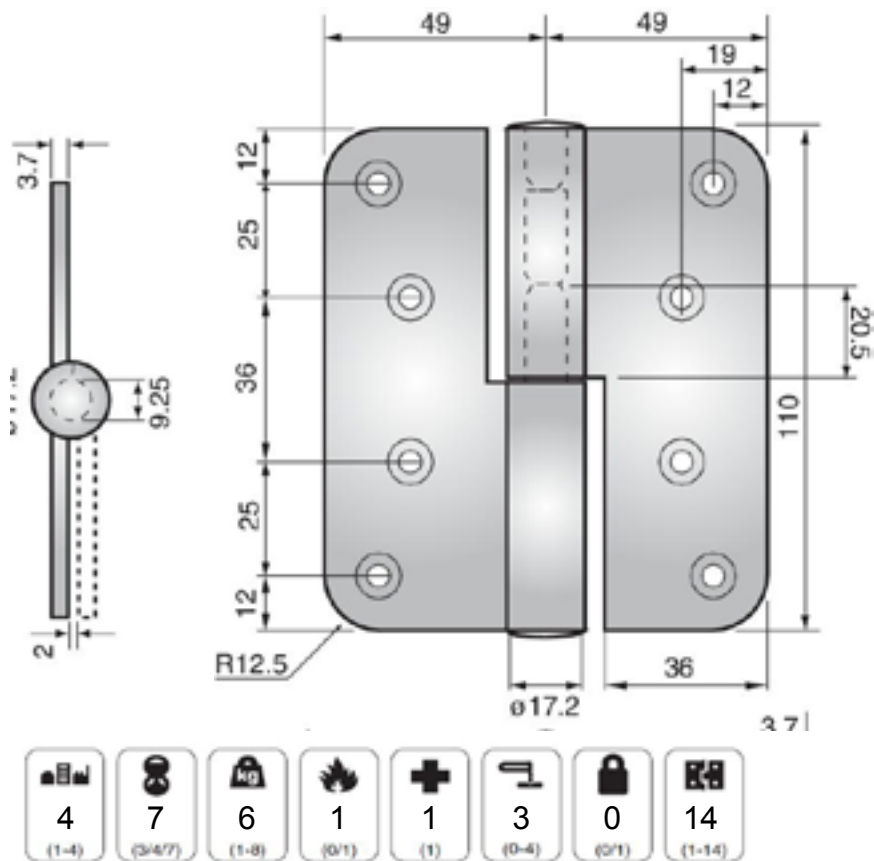
High performance, low friction lift-off butt hinges for doors subject to frequent violent usage.

Low friction bearing can aid in reconciling Approved Document B with Approved Document M.

Manufactured from Grade CS4 rolled steel and bright zinc plated.

For doors subject to very frequent and very violent usage.

This product is handed.



Material/Finish	Hand	Sales Unit	Prod Code
Zinc Plated	Left	Each	HNS908-LH
	Right		HNS908-RH

High Performance Lift-Off Butt Hinge

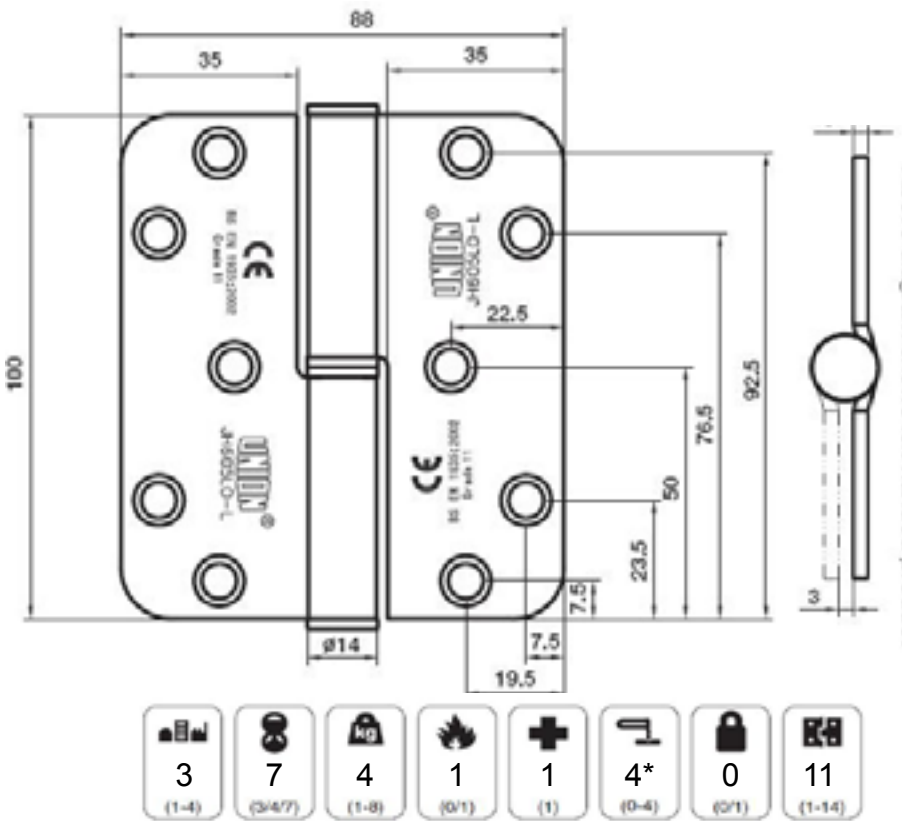
High performance, low friction, lift-off butt hinges for doors subject to a high frequency of careless use.

Self lubricating and maintenance free.

Low friction bearing can aid in reconciling Approved Document B with Approved Document M.

Manufactured from either grade 304 satin stainless steel, or zinc plated mild steel. The zinc plated version has a brushed effect to the knuckle and is aesthetically very similar to the brushed stainless steel version. Pictured in satin stainless steel.

Available square or radius cornered, pictured with radius corners. This product is handed.



\*Stainless steel version, zinc plated version is 2.

Material/Finish	Corners	Sales Unit	Prod Code L/Hand	Prod Code R/Hand
Stainless Steel	Square	Each	HNS922-SSS- LH	HNS909-SSS-RH
	Radius		HNS966-SSS-R-LH	HNS909-SSS-R-RH
Zinc Plated	Square		HNS966-BZP-LH	HNS909-BZP-RH
	Radius		HNS966-BZP-R-LH	HNS909-BZP-R-RH



Extreme Duty Journal Support Hinge



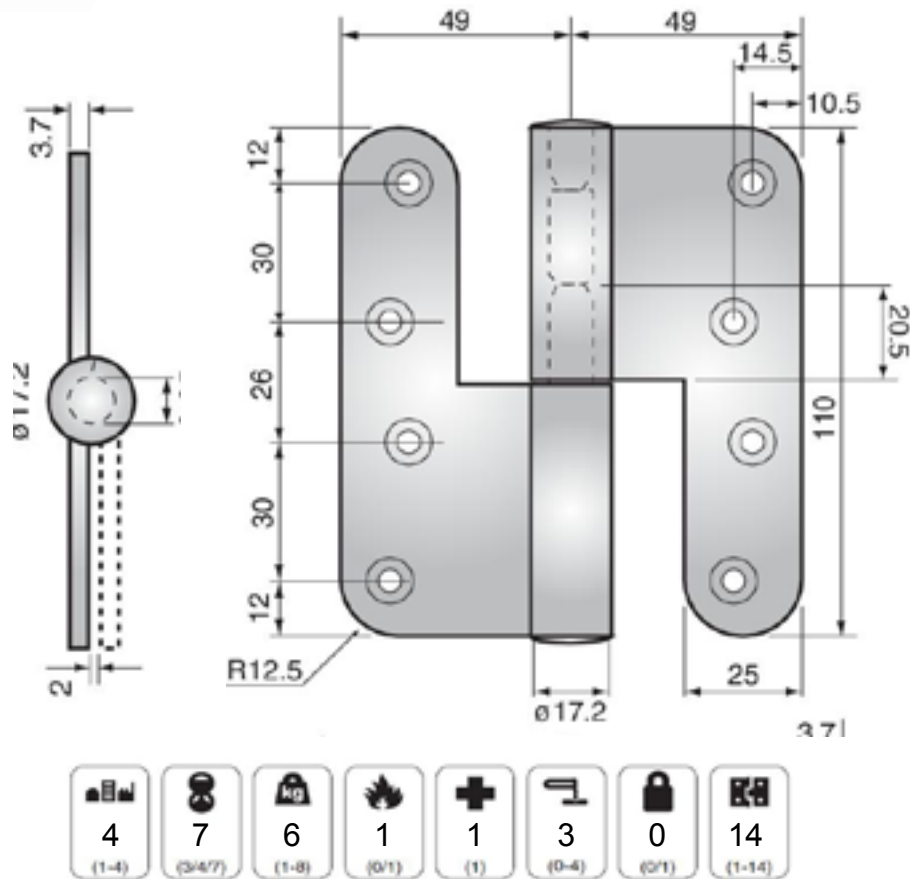
High performance, low friction journal support hinges for doors subject to frequent violent usage.

Low friction bearing can aid in reconciling Approved Document B with Approved Document M.

Manufactured from Grade CS4 rolled steel and bright zinc plated.

For doors subject to very frequent and very violent usage.

This product is handed.



Material/Finish	Hand	Sales Unit	Prod Code
Zinc Plated	Left	Each	HNS906-LH
	Right		HNS906-RH

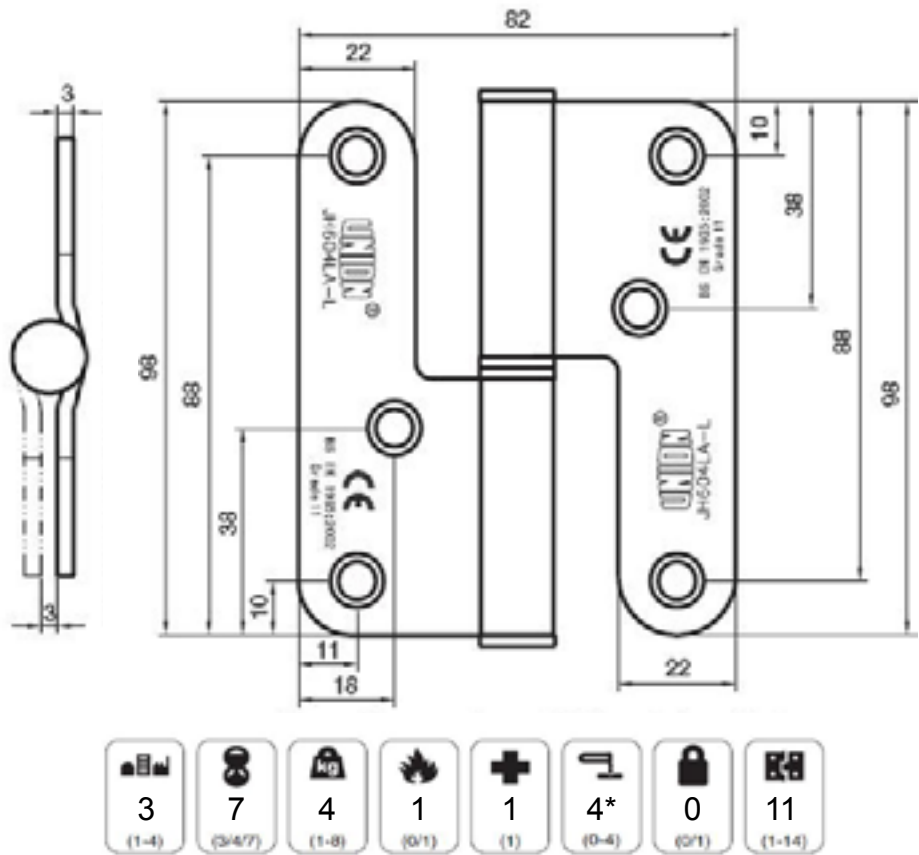
High Performance Journal Support Hinge

High performance, low friction, journal support hinges for doors subject to a high frequency of care-less use.

Self lubricating and maintenance free.

Low friction bearing can aid in reconciling Approved Document B with Approved Document M.

Manufactured from either grade 304 satin stain-less steel, or zinc plated mild steel. The zinc plated version has a brushed effect to the knuckle and is aesthetically very similar to the brushed stainless steel version. Pictured in satin stainless steel.



\*Stainless steel version, zinc plated version is 2.

Material/Finish	Hand	Sales Unit	Prod Code
Stainless Steel	Left	Each	HNS907-SSS-LH
	Right		HNS907-SSS-RH
Zinc Plated	Left		HNS930-BZP-LH
	Right		HNS930-BZP-RH

## 102 x 102mm Ball Bearing Butt Hinge



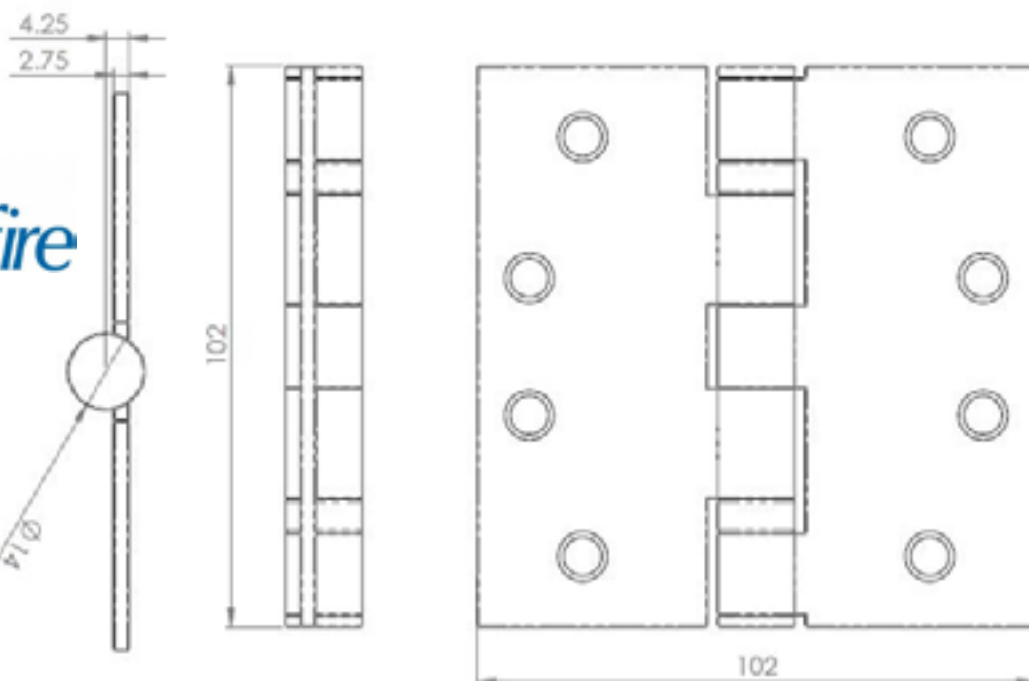
Performance ball race butt hinges for doors subject to a high frequency of careless use.

Available in three finishes:-

- Satin stainless steel
- Polished stainless steel
- Polished brass effect PVD

Pictured in satin stainless steel. Other finishes are shown on page 13.

Available square or radius cornered, pictured with square corners.



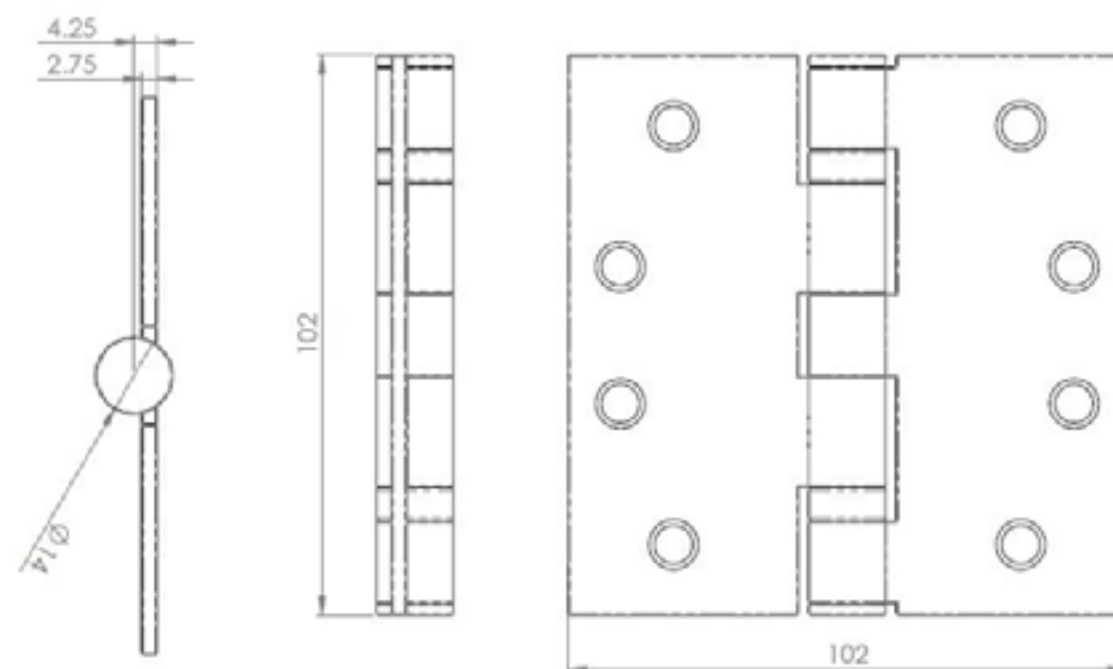
Material	Finish	Corners	Sales Unit	Prod Code
Grade 201 stainless steel	Satin	Square	Pairs	HNS4481-SSS
	Satin	Square		HNS4481-316-SSS
Grade 316 stainless steel	Polished	Radius		HNS4481-316-SSS-R
		Square		HNS4481-316-PSS
	PVD	Radius		HNS4481-316-PSS-R
		Square		HNS4481-316-PVD
		Radius		HNS4481-316-PVD-R

## 102 x 102mm Ball Bearing Security Butt Hinge

Performance ball race security butt hinges for doors subject to a high frequency of careless use.

For use on outward opening perimeter doors such as escape doors.

Manufactured from grade 201 stainless steel and available in satin stainless steel finish.



Sales Unit	Prod Code
Pairs	HNS4481-SEC



## 102 x 76mm Ball Bearing Butt Hinge



Performance ball race butt hinges for doors subject to a high frequency of careless use.

Available in five finishes:-

- Satin stainless steel
- Polished stainless steel
- Polished brass effect PVD
- Antique brass effect
- Black electro plated

Pictured in satin stainless steel. Other finishes are shown on page 21.

Available square or radius cornered, pictured with square corners.



Material	Finish	Corners	Sales Unit	Prod Code
Grade 201 stainless steel	Satin	Square	Pairs	HNS228-SSS
		Radius		HNS228-SSS-R
Grade 304 stainless steel	Satin	Square		HNS228-304-SSS
		Radius		HNS228-304-SSS-R
	Polished	Square		HNS228-304-PSS
		Radius		HNS228-304-PSS-R
	PVD	Square		HNS228-304-PVD
		Radius		HNS228-304-PVD-R
Grade 316 stainless steel	Satin	Square		HNS228-316-SSS
		Radius		HNS228-316-SSS-R
	Polished	Square		HNS228-316-PSS
		Radius		HNS228-316-PSS-R
	PVD	Square		HNS228-316-PVD
		Radius		HNS228-316-PVD-R
Mild Steel	Antique brass	Square		HNS228-FB
	Black	Square		HNS228-BLK



Polished



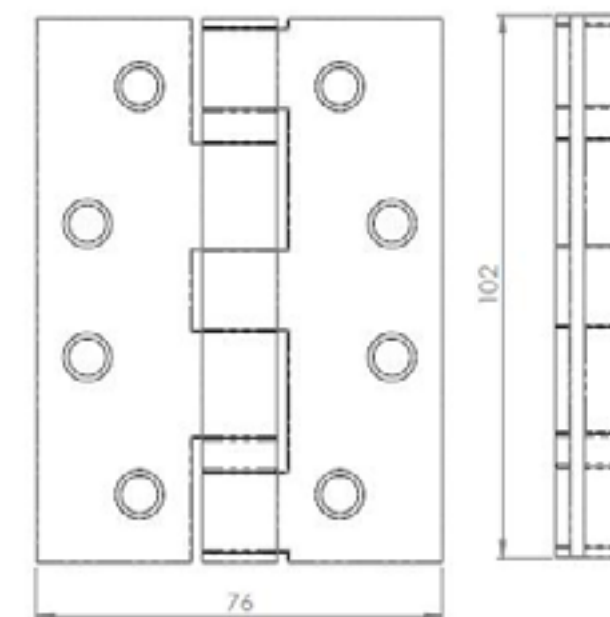
PVD



Black



Antique Brass





## 102 x 76mm Ball Bearing Security Butt Hinge

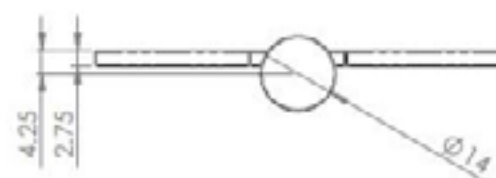
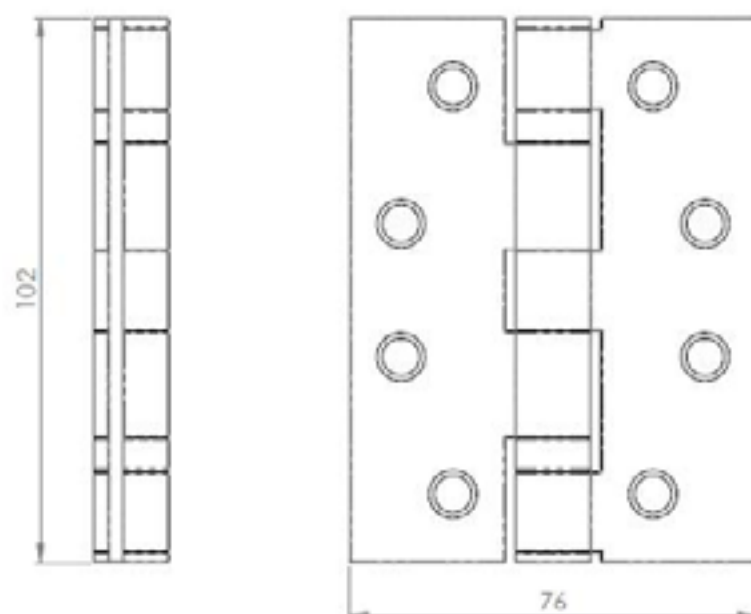


Performance ball race, security butt hinges for doors subject to a high frequency of careless use.

Used on outward opening perimeter doors, such as escape doors.

Manufactured from grade 304 stainless steel and available satin stainless steel finish.

Available square or radius cornered, pictured with square corners.



Corners	Sales Unit	Prod Code
Square	Pairs	HNS228-SEC
Radius		HNS228-SEC-R

## 102 x 76mm Conductor Butt Hinge

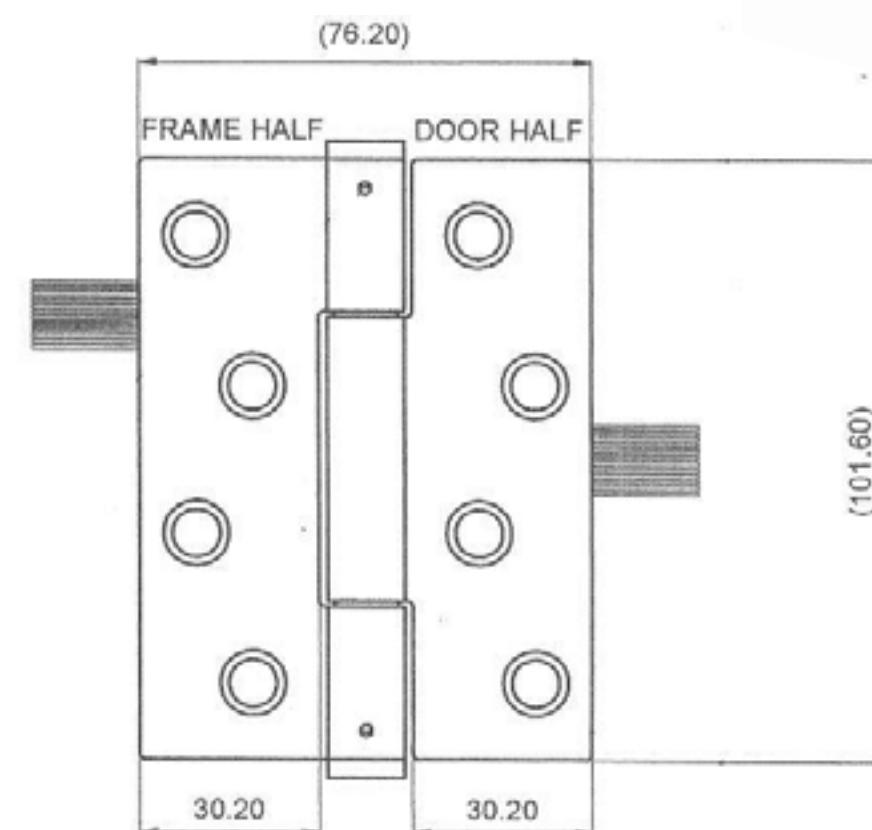
Performance conductor butt hinges for doors subject to a high frequency of careless use.

Manufactured from grade 304 stainless steel and available in three finishes.

- Satin stainless steel
- Polished stainless steel
- Polished brass effect PVD

Pictured in satin stainless steel.

This hinge has four wires for discrete transfer of power from the frame to the door.



Finish	Sales Unit	Prod Code
Satin	Each	HNS228-CON4-SSS
Polished		HNS228-CON4-PSS
PVD		HNS228-CON4-PVD

## 102mm Parliament Hinge - 50mm Reveal



Performance, parliament hinges for doors subject to a high frequency of careless use.

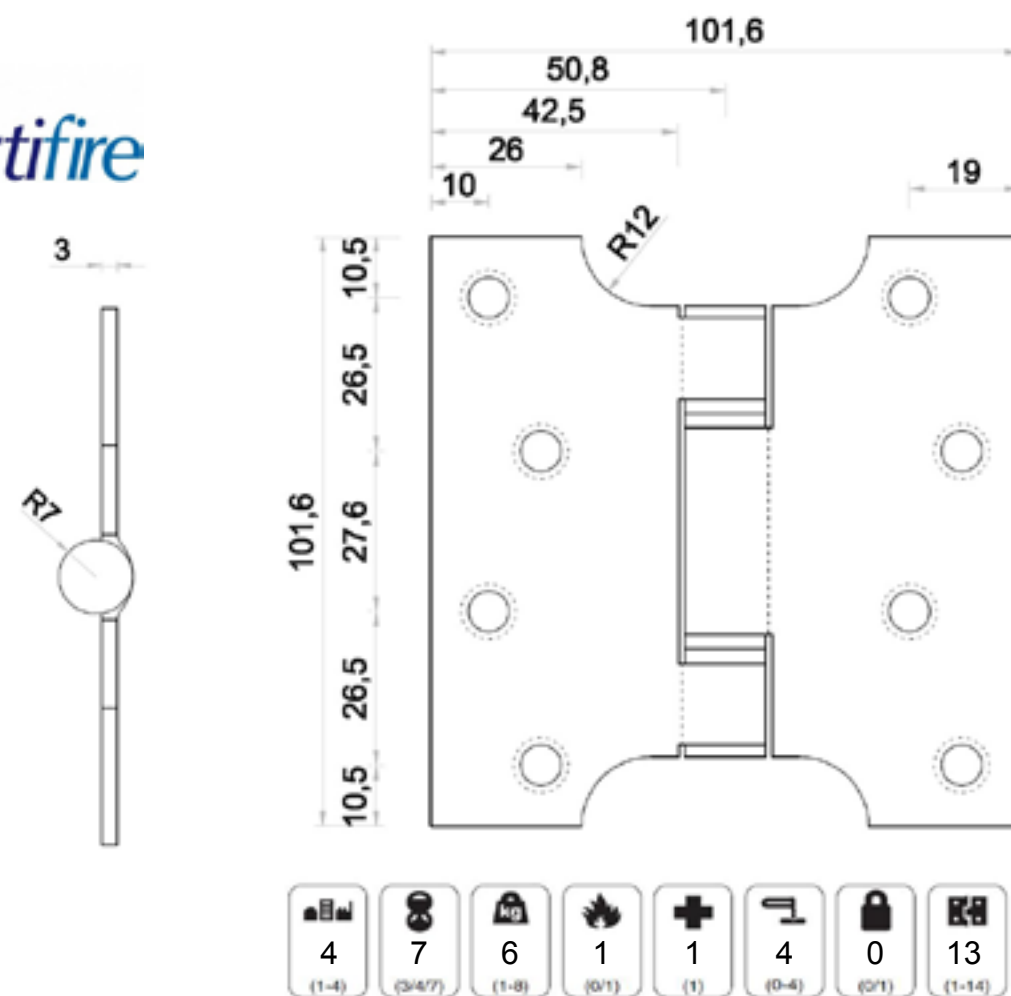
Manufactured from Grade 304 stainless steel.

Available in three finishes:-

- Satin stainless steel
- Polished stainless steel
- Polished brass effect PVD

Pictured in polished stainless steel.

This hinge will enable a door to fold back overcoming a reveal of 50mm.



Finish	Sales Unit	Prod Code
Satin	Pairs	HNS228-P050-SSS
Polished		HNS228-P050-PSS
PVD		HNS228-P050-PVD

## 102mm Parliament Hinge - 75mm Reveal



Performance, parliament hinges for doors subject to a high frequency of careless use.

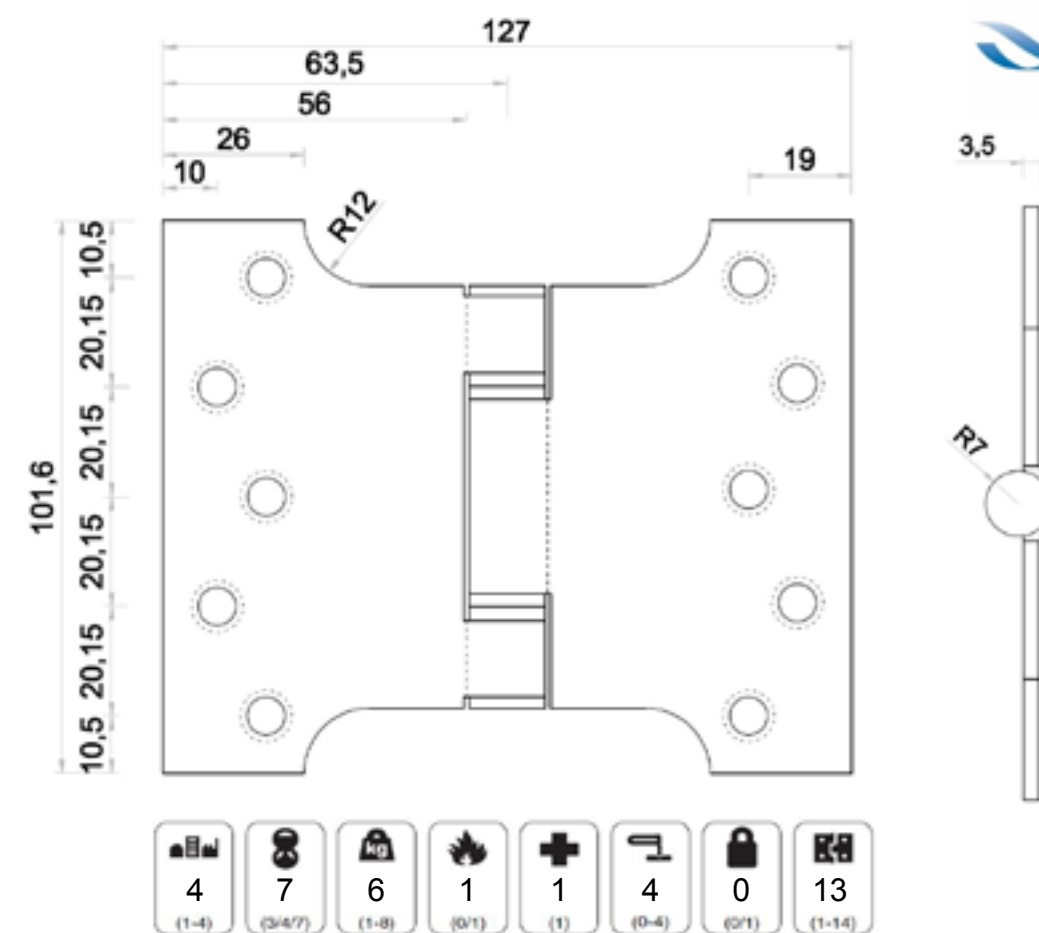
Manufactured from Grade 304 stainless steel.

Available in three finishes:-

- Satin stainless steel
- Polished stainless steel
- Polished brass effect PVD

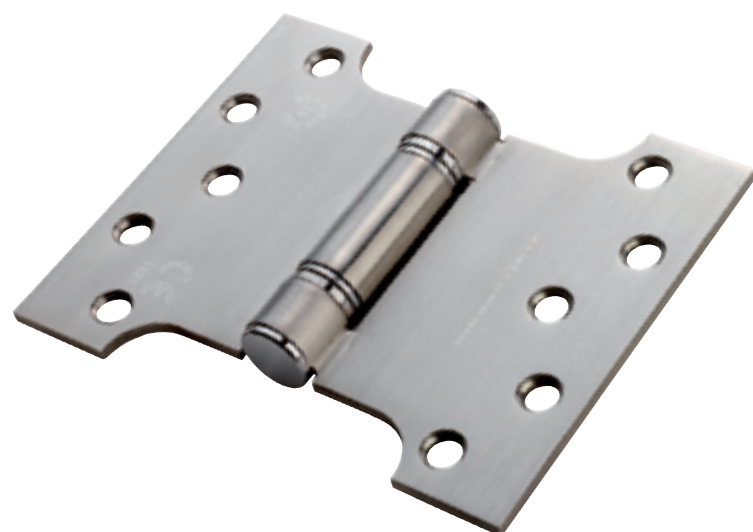
Pictured in satin stainless steel.

This hinge will enable a door to fold back overcoming a reveal of 75mm.



Finish	Sales Unit	Prod Code
Satin	Pairs	HNS228-P075-SSS
Polished		HNS228-P075-PSS
PVD		HNS228-P075-PVD

## 102mm Parliament Hinge - 100mm Reveal



Performance, parliament hinges for doors subject to a high frequency of careless use.

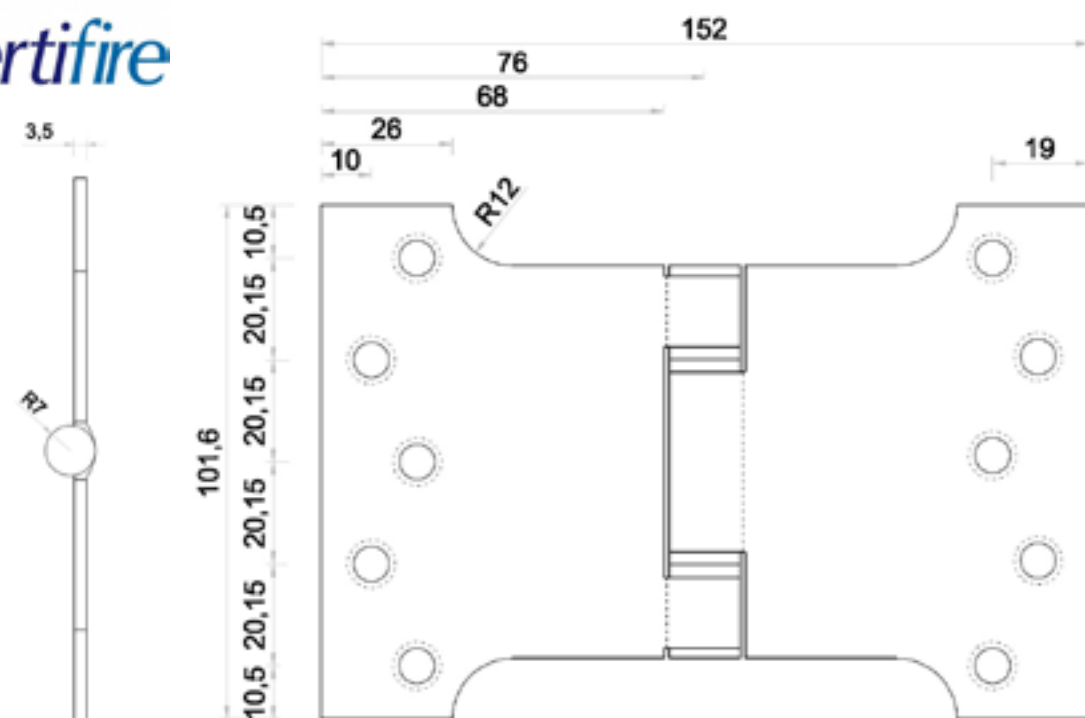
Manufactured from Grade 304 stainless steel.

Available in three finishes:-

- Satin stainless steel
- Polished stainless steel
- Polished brass effect PVD

Pictured in satin stainless steel.

This hinge will enable a door to fold back overcoming a reveal of 100mm.



Finish	Sales Unit	Prod Code
Satin	Pairs	HNS228-P100-SSS
Polished		HNS228-P100-PSS
PVD		HNS228-P100-PVD

## 102 x 76mm Ball Bearing Rebated Hinge

Performance ball race butt hinges for doors subject to a high frequency of careless use.

For use on over-rebated doors such as environmental or sound-proof doors.

Manufactured from grade 201 stainless steel and available in satin stainless steel finish.



Sales Unit	Prod Code
Pairs	HNS315



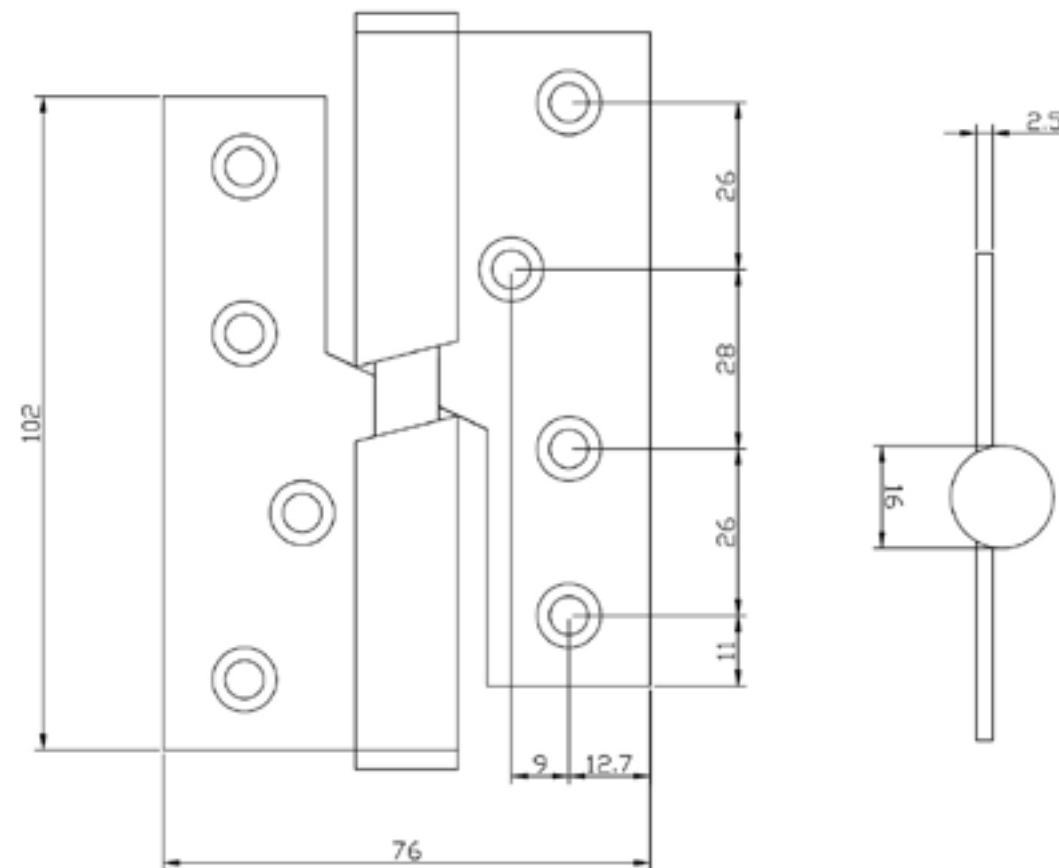
## 102 x 76mm Rising Butt Hinge



Performance rising butt hinges for doors subject to a high frequency of careless use.

Manufactured from grade 304 stainless steel and available in satin stainless steel finish.

This product is handed.



Hand	Sales Unit	Prod Code
Left	Pairs	HNS837L
Right		HNS846R



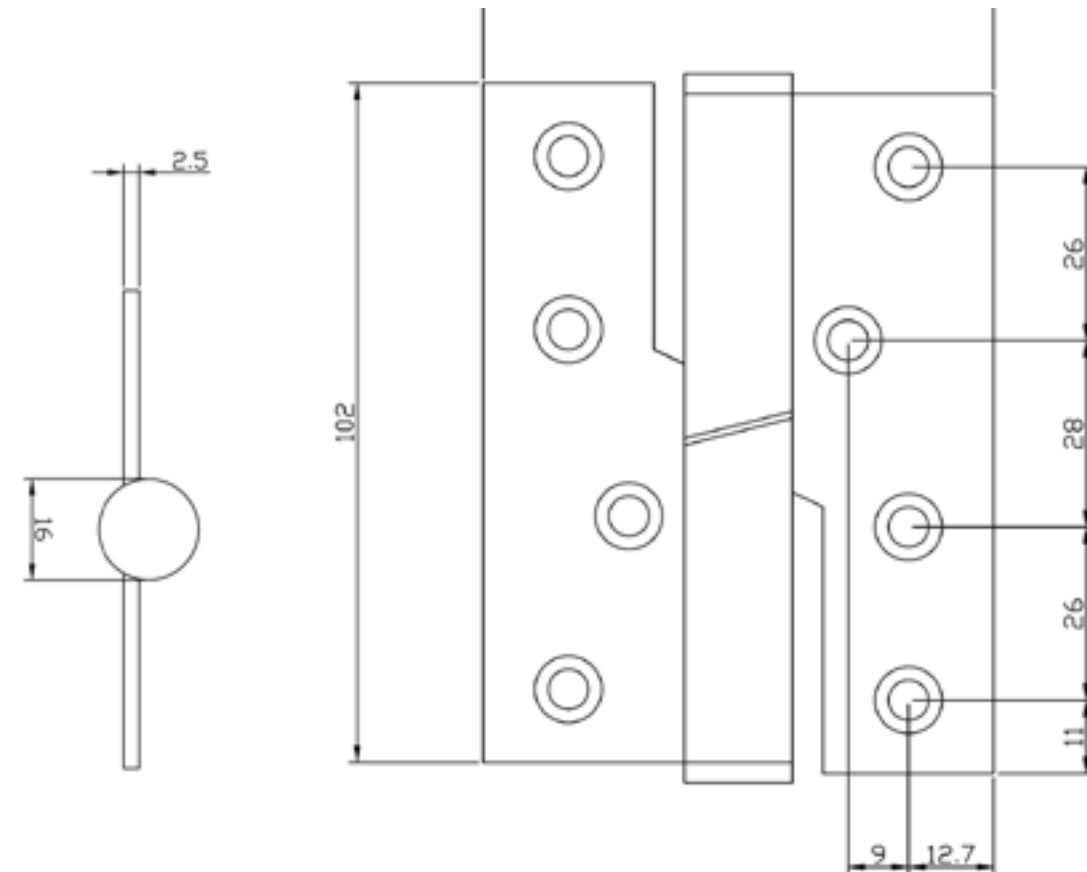
## 102 x 76mm Falling Butt Hinge



Performance falling butt hinges for doors subject to a high frequency of careless use.

Manufactured from grade 304 stainless steel and available in satin stainless steel finish.

This product is handed.



Hand	Sales Unit	Prod Code
Left	Pairs	HNS857L
Right		HNS868R



## 76 x 68mm Ball Bearing Butt Hinge

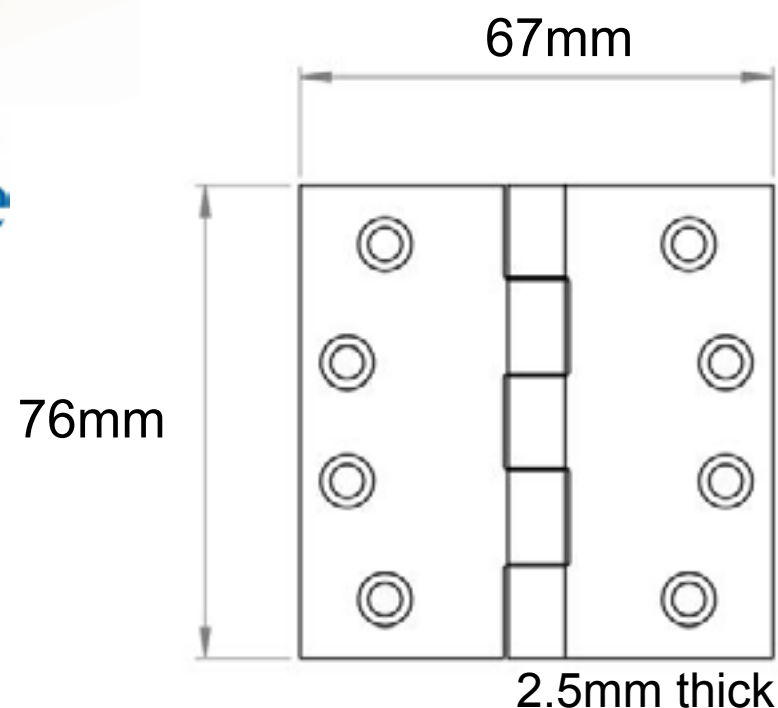


Performance ball race butt hinges for doors subject to a high frequency of careless use.

Manufactured from grade 304 stainless steel and available in three finishes:-

- Satin stainless steel
- Polished stainless steel
- Polished brass effect PVD

Pictured in satin stainless steel.



Finish	Corners	Sales Unit	Prod Code
Satin	Square	Pairs	HNS181-SSS
	Radius		HNS181-SSS-R
Polished	Square		HNS181-PSS
	Radius		HNS181-PSS-R
PVD	Square		HNS181-PVD
	Radius		HNS181-PVD-R

## 76 x 52mm Ball Bearing Butt Hinge

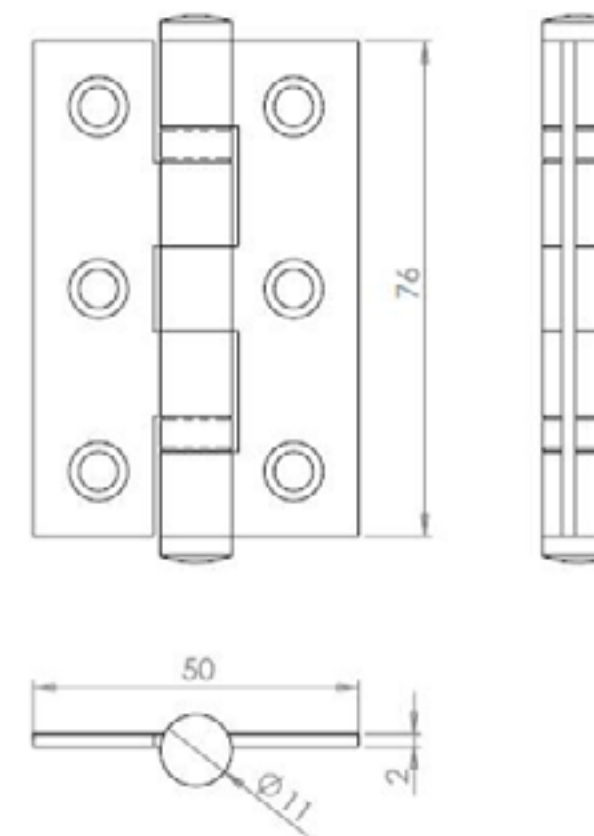
Performance ball race butt hinges for domestic, internal doors.

Manufactured from grade 201 stainless steel and available in four finishes:-

- Satin stainless steel
- Polished stainless steel
- Polished brass effect PVD
- Black electro plated\*

Pictured in polished stainless steel.

\*Manufactured from mild steel.



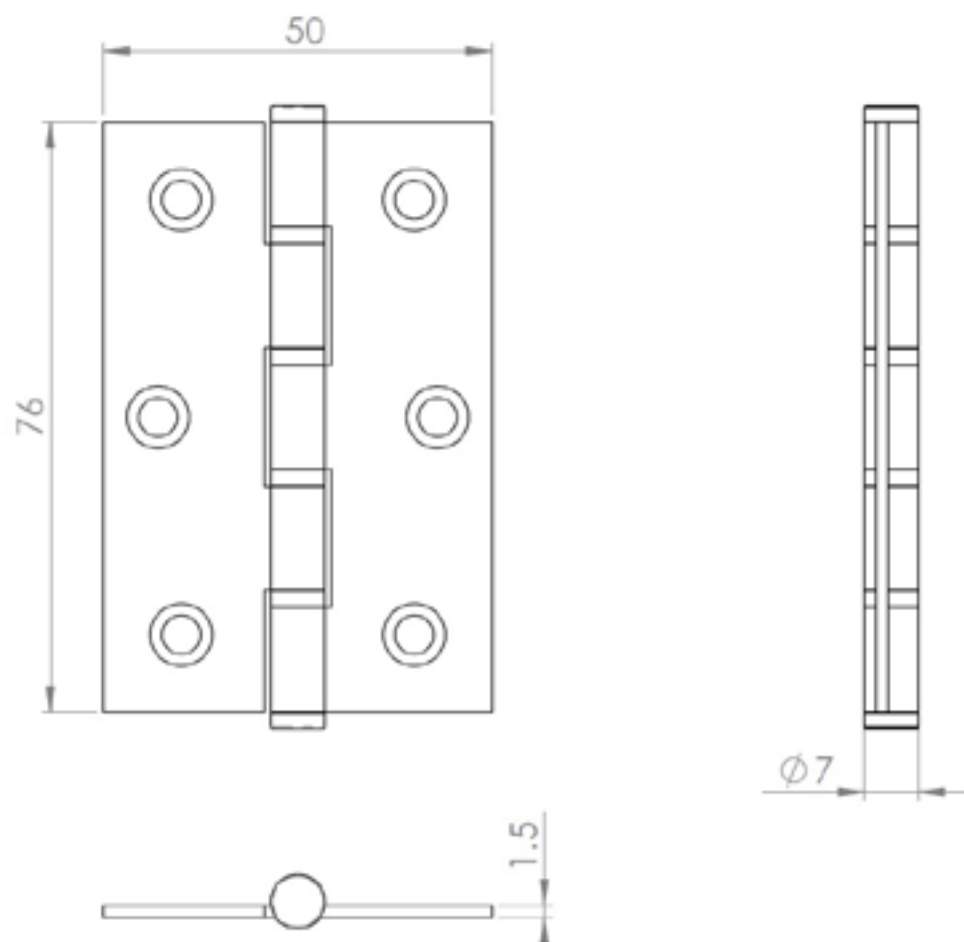
Finish	Sales Unit	Prod Code
Satin	Pairs	HNS177-SSS
Polished		HNS177-PSS
PVD		HNS177-PVD
Black*		HNS177-BLK

## 76 x 50mm Washered Bearing Butt Hinge



Washed butt hinges for low frequency use doors and windows.

Manufactured from grade 201 stainless steel and available in satin stainless steel.



Sales Unit	Prod Code
Pairs	HNS103

## 92 x 92 x 14mm/2.7mm Adjustable Butt Hinge

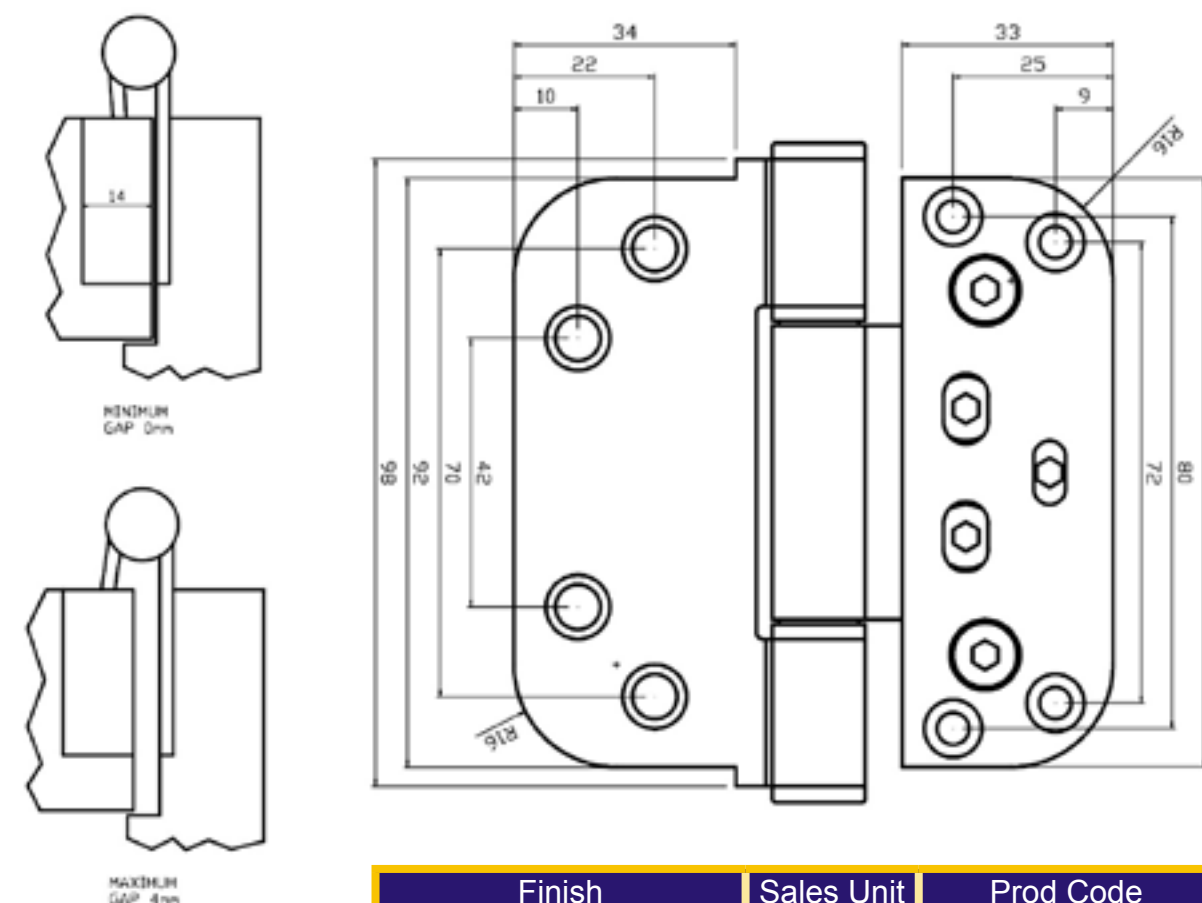
Adjustable butt hinge for doors subject to a high frequency of careless use.

Manufactured from Grade CS4 rolled steel and available in two finishes.

- Bright zinc plated mild steel
- Yellow zinc plated mild steel

Fully adjustable, in situ, in three dimensions +/- 2mm.

These hinges have been subject to a successful 240 hour salt spray test, and are therefore suitable for inland external use.



Finish	Sales Unit	Prod Code
Bright Zinc Plated	Each	HNADJ-BZP
Yellow Zinc Plated		HNADJ-EB



451 Pattern Butt Hinge



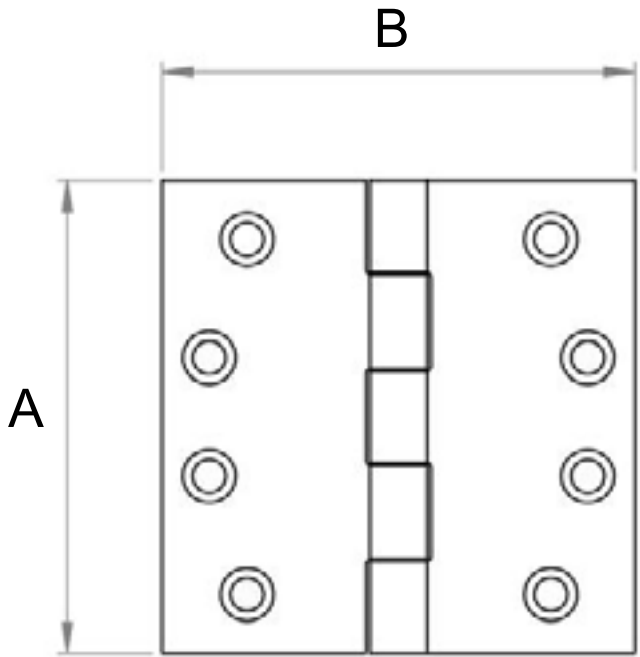
Steel butt hinges for doors subject to medium frequency careful use, but where there is a chance of occasional misuse.

Manufactured from mild steel and available in three finishes:-

- Bright zinc plated
- Electro brass
- Electro black

Pictured in electro black finish.

Suitable for internal use only.



Finish	A	B	Sales Unit	Prod Code
BZP	102mm	76mm	Pairs	HN183
	76mm	63mm		HN173
Electro brass	102mm	76mm		HN185
	76mm	63mm		HN175
Electro black	102mm	76mm		HN184
	76mm	63mm		HN174

1838 Pattern Butt Hinge



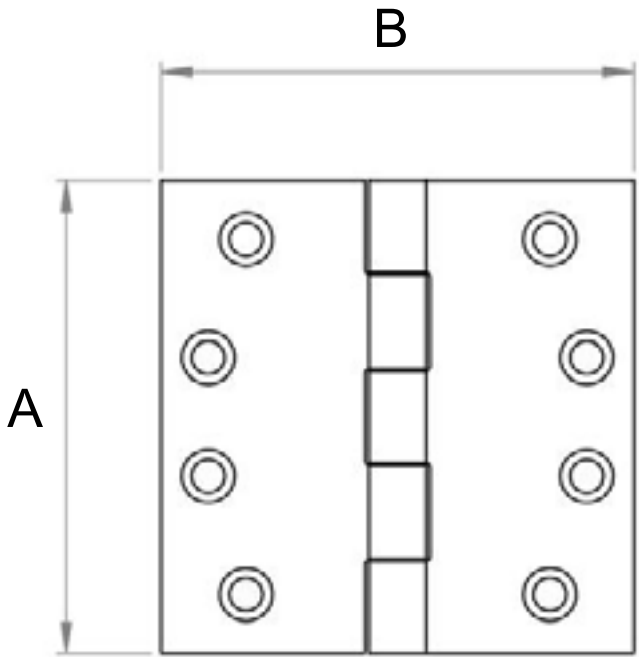
Steel butt hinges for doors subject to medium frequency use by people with a high incentive to exercise care.

Manufactured from mild steel and available in three finishes:-

- Bright zinc plated
- Electro brass
- Electro black

Pictured in electro brass finish.

Suitable for internal use.



Finish	A	B	Sales Unit	Prod Code
BZP	102mm	72mm	Pairs	HN123
	75mm	50mm		HN104
	50mm	39mm		HN102
Electro brass	102mm	72mm		HN137
	75mm	50mm		HN136
	50mm	39mm		HN135
Electro black	102mm	72mm		HN130

## Extreme Duty 100mm Brass Butt Hinge



High performance, low friction butt hinges for doors subject to frequent violent usage.

Self lubricating and maintenance free, with concealed bearings for improved aesthetics.

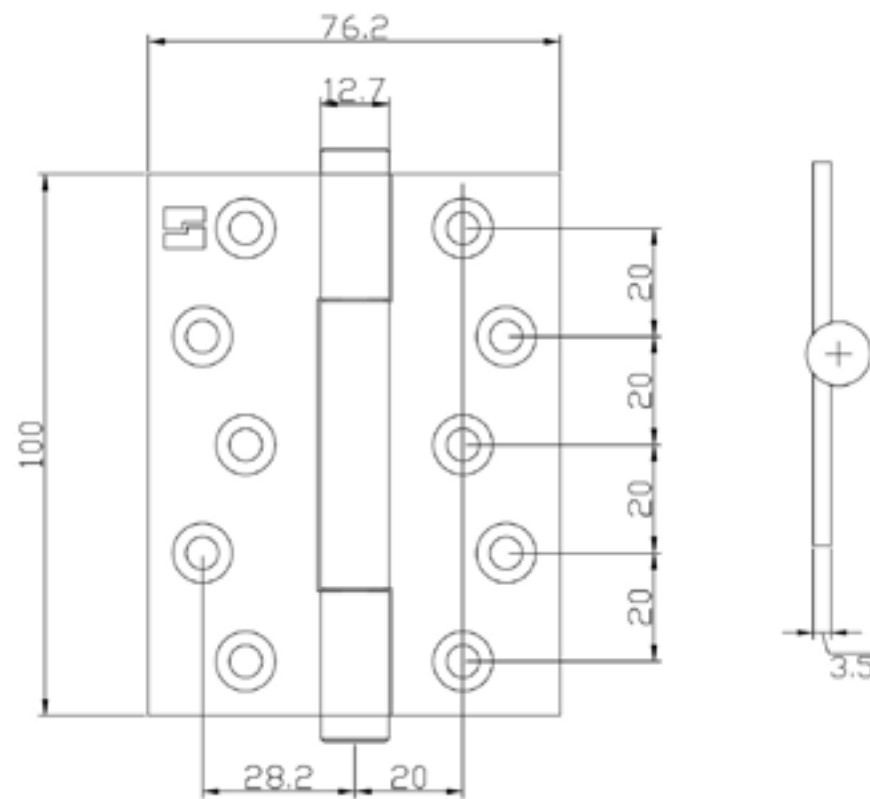
Low friction bearing can assist in reconciling Approved Document B with Approved Document M.

Manufactured from brass with high performance concealed bearings, available in 15 finishes.

This range of hinges can be further customised by changing the standard finial (pictured) with the finial options on the opposite page.

The finials are available in the finishes listed opposite, but need not be the same finish as the leaves, allowing a high degree of customisation for a hinge.

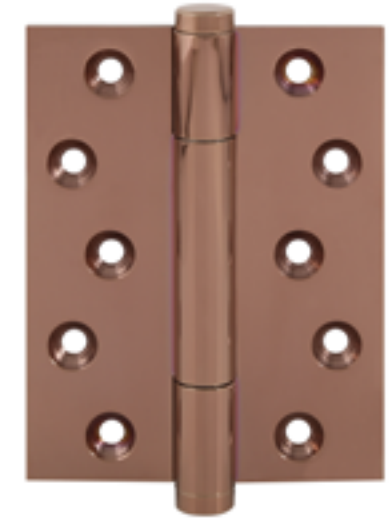
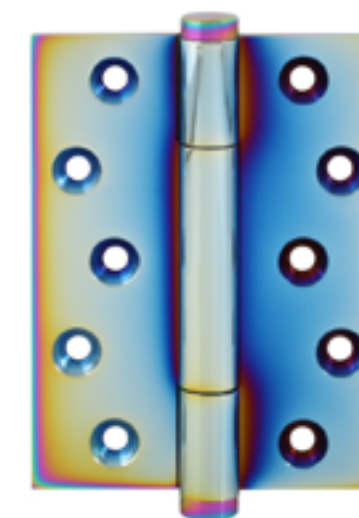
This product is available with a CE mark for fire doors, or without one for non-fire doors.



Prod Code  
FINIAL-160-X

Finishes available are:-

- Self colour
- Satin brass lacquered
- Polished brass lacquered
- Polished brass unlacquered
- Copper plated
- Antique brass
- Antique gold
- Pewter
- Satin chrome plate
- Polished chrome plate
- Satin nickel plate
- Polished nickel plate
- Black nickel plate
- Imitation bronze metal antique
- Rainbow



A

B

C

D

E

F

G

100 x 75mm Brass Butt Hinge



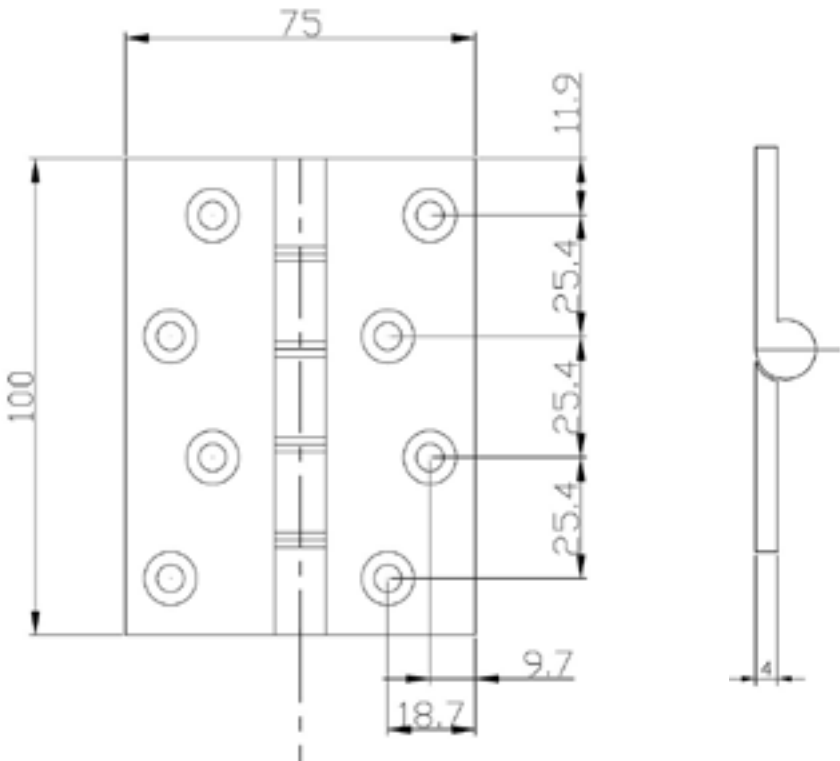
Very good quality, extruded brass butt hinges for doors subject to medium frequency careful use, but where there is a chance of occasional misuse.

Manufactured from extruded brass and available in twelve finishes:-

- Self colour
- Satin brass lacquered
- Polished brass lacquered (pictured)
- Polished brass unlacquered
- Antique brass
- Antique gold
- Pewter
- Satin chrome plate
- Polished chrome plate
- Satin nickel plate
- Polished nickel plate
- Imitation bronze metal antique

Bearings are double phosphor bronze washered.

A CE marked version is available for fire doors.



  
2  
(1-4)

  
7  
(3/4/7)

  
2  
(1-8)

  
1  
(0/1)

  
1  
(1)

  
4  
(0-4)

  
0  
(0/1)

  
7  
(1-14)

Sales Unit	Prod Code
Pairs	HNB2212-X

102 x 76mm Brass Butt Hinge



Good quality, extruded brass butt hinges for doors subject to medium frequency use by people with a high incentive to exercise care.

Manufactured from extruded brass and available in four finishes:-

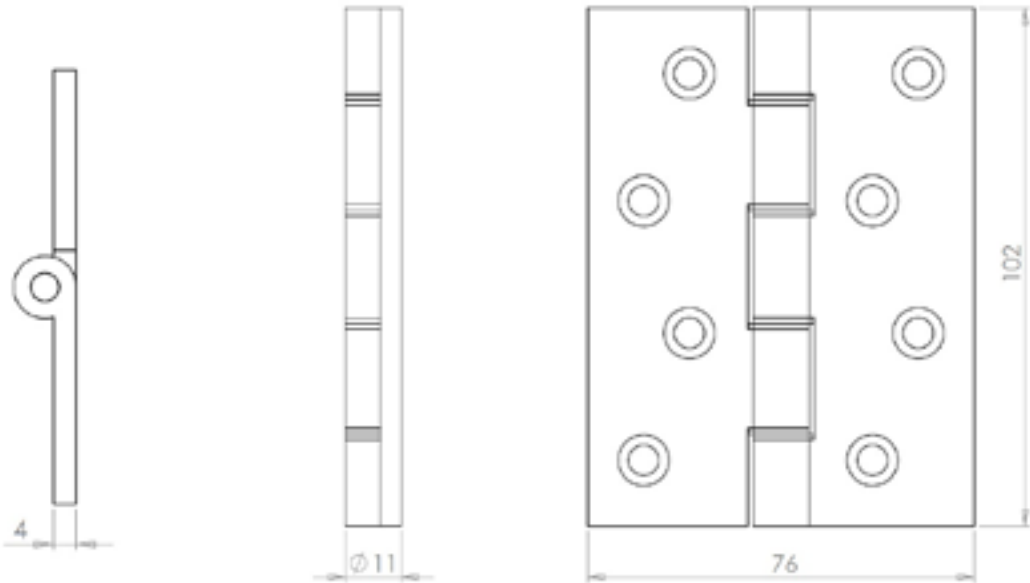
- Polished brass lacquered
- Satin chrome plate
- Polished chrome plate
- Imitation bronze

Pictured in polished chrome.

Bearings are:-

Polished brass and imitation bronze finishes have double phosphor bronze washered bearings.

Polished and satin chrome finishes have double stainless steel washered bearings.



Finish	Sales Unit	Prod Code
Polished Brass	Pairs	HNB2214-PB
Satin Chrome		HNB2214-SC
Polished Chrome		HNB2214-PC
Imitation Bronze		HNB2214-FB



Parliament

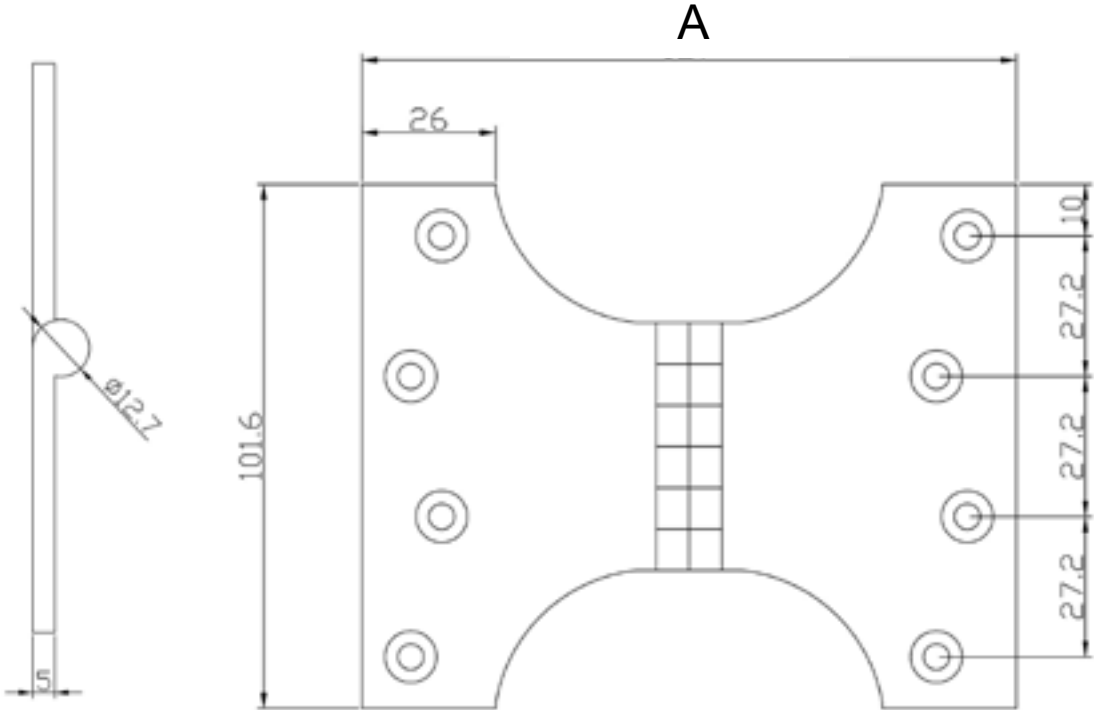


Very good quality, extruded brass parliament hinges for doors subject to medium frequency use by people with a high incentive to exercise care.

Manufactured from extruded brass and available in twelve finishes:-

- Self colour
- Satin brass lacquered
- Polished brass lacquered (pictured)
- Polished brass unlacquered
- Antique brass
- Antique gold
- Pewter
- Satin chrome plate
- Polished chrome plate
- Satin nickel plate
- Polished nickel plate
- Imitation bronze metal antique

Bearings are plain.



Dimension A	Sales Unit	Prod Code
102mm	Pairs	HNB154-X
127mm		HNB155-X
152mm		HNB156-X

Parliament



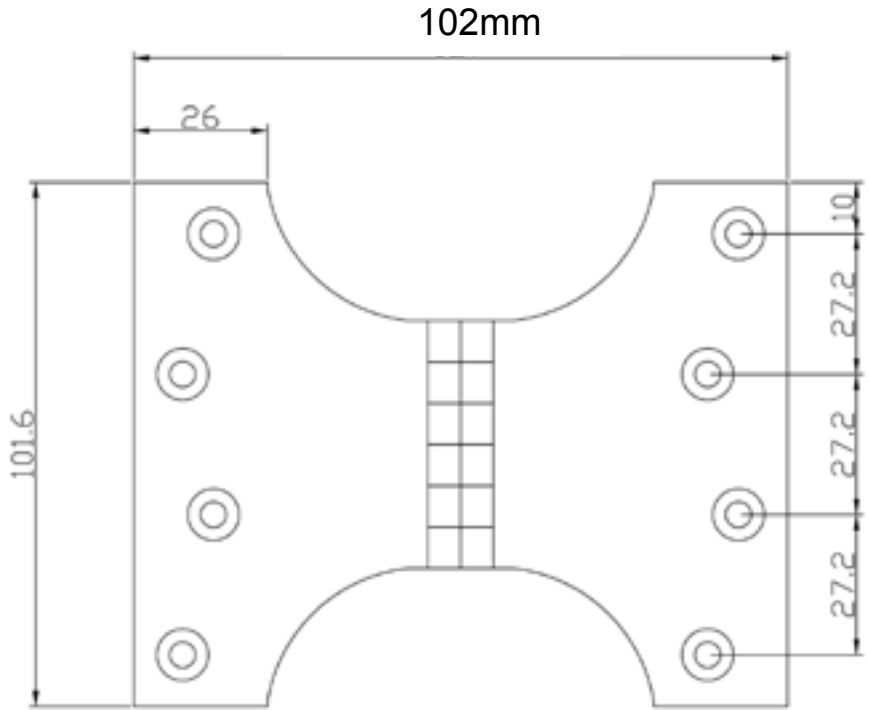
Good quality, extruded brass butt hinges for doors subject to medium frequency use by people with a high incentive to exercise care.

Manufactured from extruded brass and available in three finishes:-

- Polished brass lacquered
- Satin chrome plate
- Polished chrome plate

Pictured in polished chrome.

Bearings are plain.



Finish	Sales Unit	Prod Code
Polished Brass	Pairs	HNB230
Satin Chrome		HNC094
Polished Chrome		HNC090

75 x 50mm Brass Butt Hinge

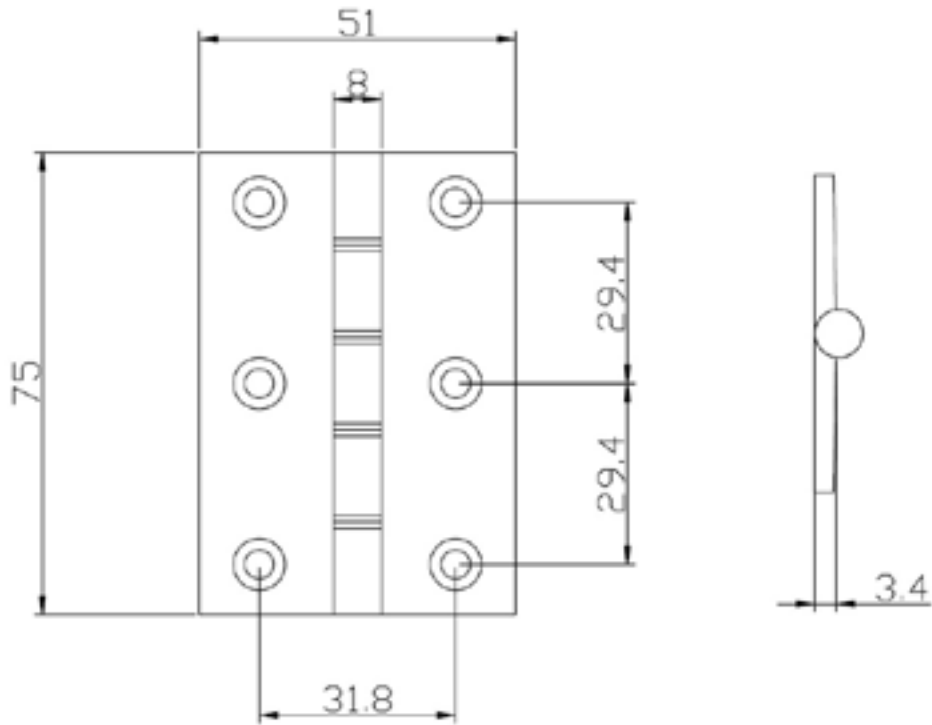


Very good quality, extruded brass butt hinges for doors subject to medium frequency use by people with a high incentive to exercise care.

Manufactured from extruded brass and available in twelve finishes:-

- Self colour
- Satin brass lacquered
- Polished brass lacquered (pictured)
- Polished brass unlacquered
- Antique brass
- Antique gold
- Pewter
- Satin chrome plate
- Polished chrome plate
- Satin nickel plate
- Polished nickel plate
- Imitation bronze metal antique

Bearings are double phosphor bronze washered.



Sales Unit	Prod Code
Pairs	HNB133-X



76 x 50mm Brass Butt Hinge



Good quality, extruded brass butt hinges for doors subject to medium frequency use by people with a high incentive to exercise care.

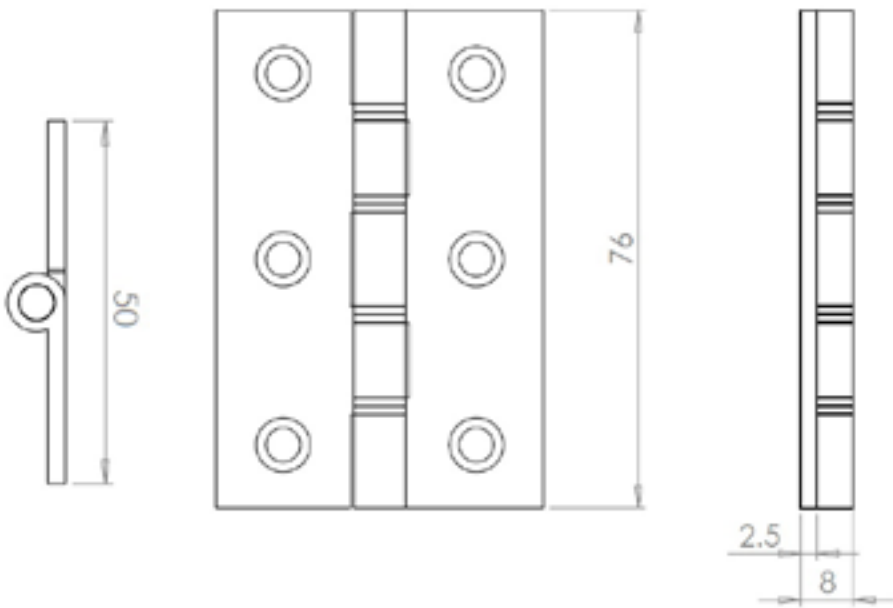
Manufactured from extruded brass and available in four finishes:-

- Polished brass lacquered
- Satin chrome plate
- Polished chrome plate
- Imitation bronze

Pictured in polished chrome.

Polished brass and imitation bronze finishes have double phosphor bronze washered bearings.

Polished and satin chrome finishes have double stainless steel washered bearings.



Imitation bronze



Finish	Sales Unit	Prod Code
Polished Brass	Pairs	HNC035-PB
Satin Chrome		HNC035-SC
Polished Chrome		HNC035-PC
Imitation Bronze		HNB213-FB



## Concealed Hinges



## Concealed Hinges

### 120kg Flush Doors

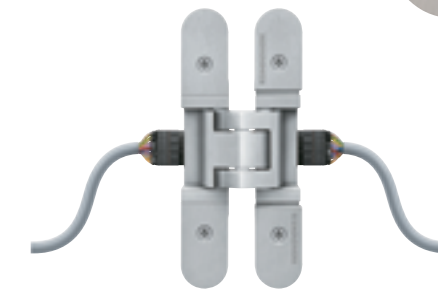
Concealed hinges for doors subject to frequent violent usage.

Manufactured from stainless steel and available in satin stainless steel finish.

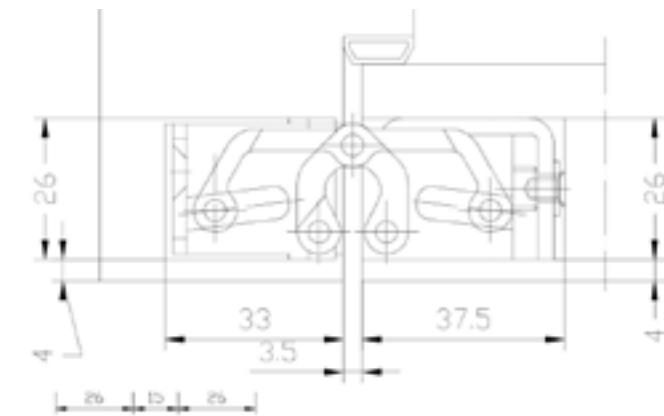
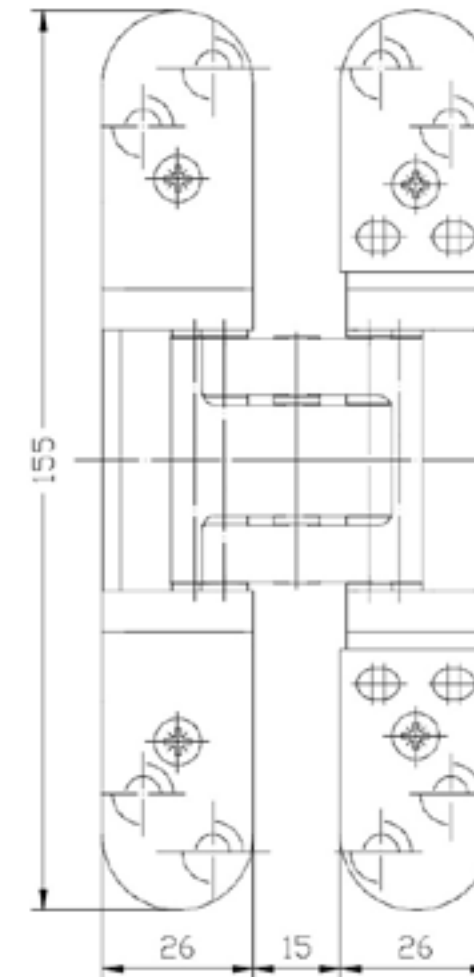
Fully adjustable, in situ, in three dimensions  $\pm 3\text{mm}$ .

Opening angle up to  $180^\circ$ .

Conductor version available.



Conductor version



Prod Code  
CH-FLUSH-120-SSS



## 120kg Flush or Cladded Doors



Concealed hinges for doors subject to frequent violent usage.

Available in seven finishes:-

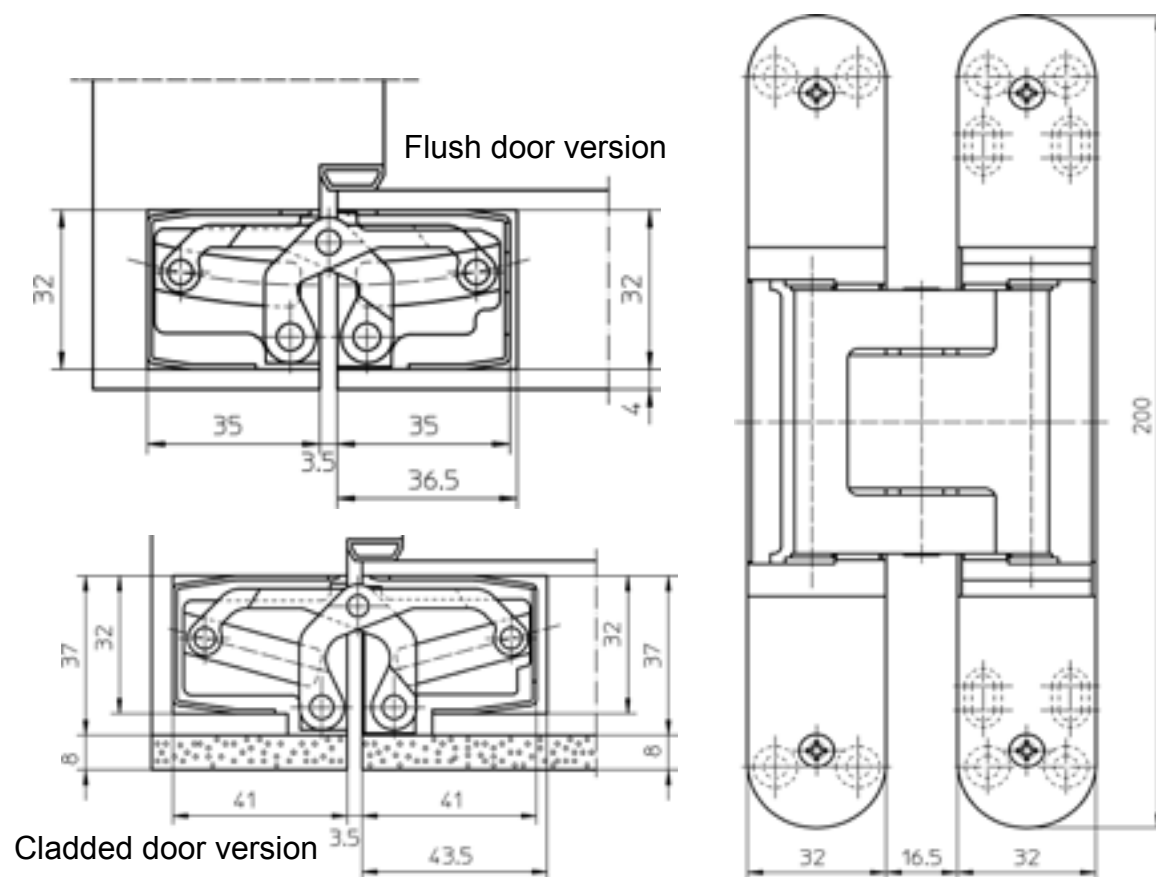
- Polished brass
- Matt chrome
- Matt nickel (pictured)
- Satin stainless steel effect
- Satin nickel plate
- Polished nickel plate
- Imitation bronze metal antique

Fully adjustable, in situ, in three dimensions +/- 3mm.

Opening angle up to 180°.

Conductor version available.

\*Cladded door version 100kg.



Type	Prod Code
Flush	CH-FLUSH-120-X
Cladded	CH-CLAD-120-X



## 80kg Flush Doors



Concealed hinges for doors subject to a high frequency of careless use.

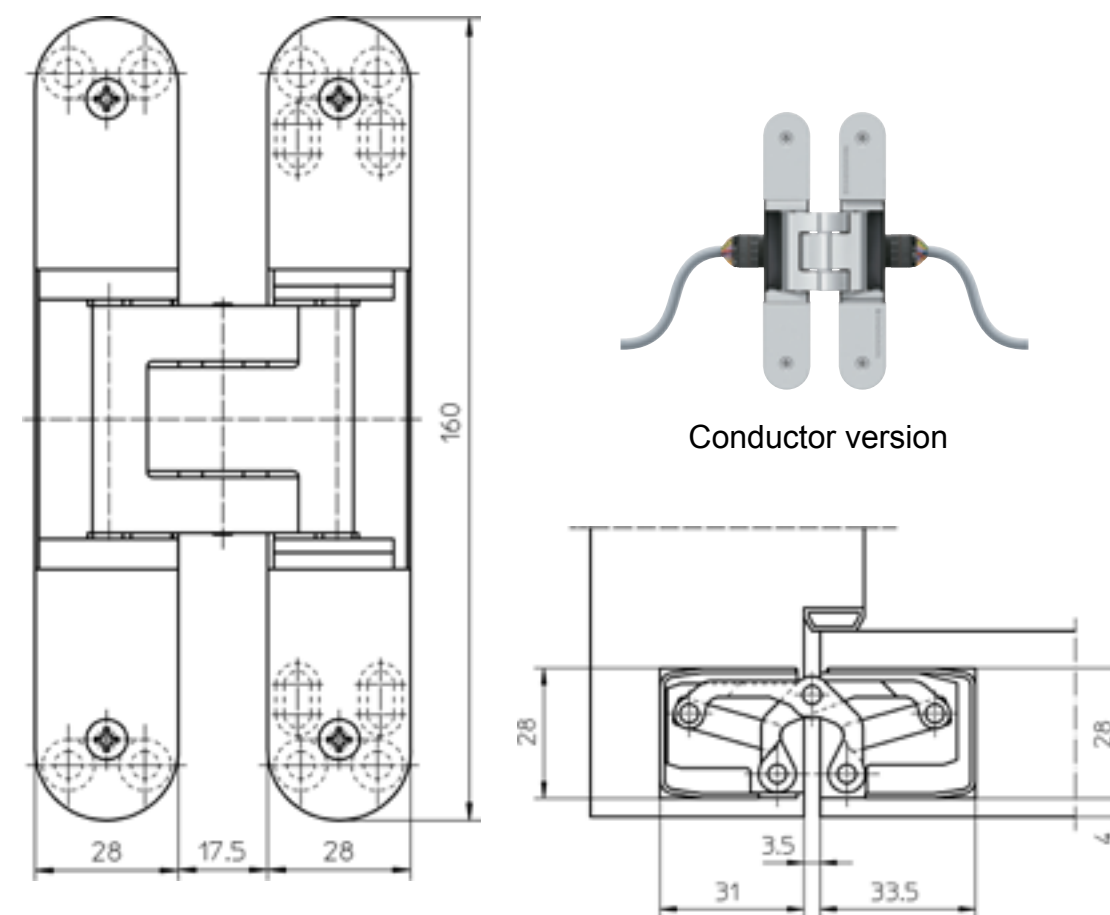
Available in seven finishes:-

- Polished brass
- Matt chrome
- Matt nickel (pictured)
- Satin stainless steel effect
- Satin nickel plate
- Polished nickel plate
- Imitation bronze metal antique

Fully adjustable, in situ, in three dimensions +/- 3mm.

Opening angle up to 180°.

Conductor version available.



Prod Code
CH-FLUSH-80-X

40kg Flush Doors

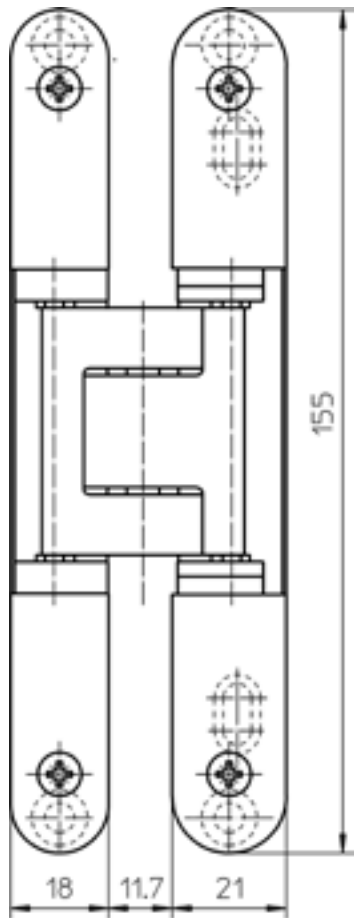
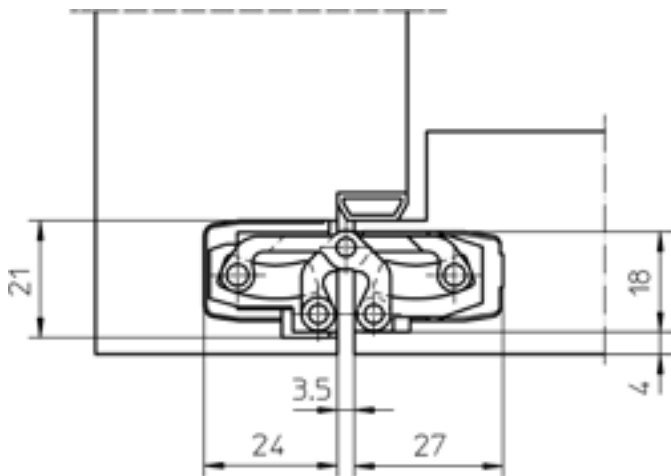
Concealed hinges for doors subject to medium frequency careful use, but where there is a chance of occasional misuse.

Available in seven finishes:-

- Polished brass
- Matt chrome
- Matt nickel (pictured)
- Satin stainless steel effect
- Satin nickel plate
- Polished nickel plate
- Imitation bronze metal antique

Fully adjustable, in situ, in three dimensions +/- 3mm.

Opening angle up to 180°.



Prod Code  
CH-FLUSH-40-X

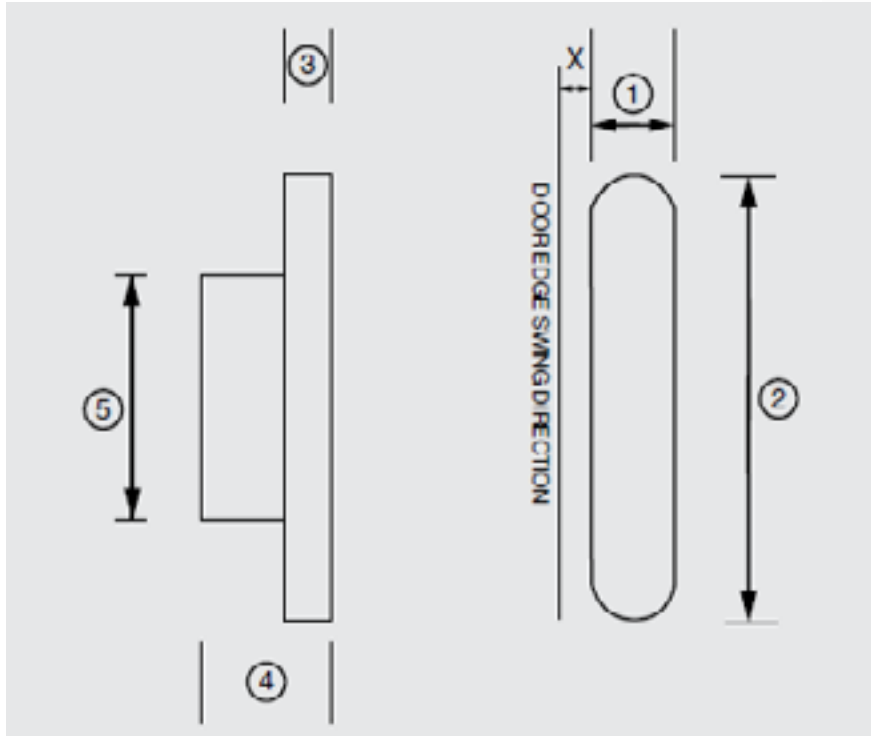


Non-adjustable for Flush Doors & Cupboards

A non-adjustable range of concealed hinges for non-critical doors, cupboards and hatches.

Available in satin chrome plate finish.

Maximum door mass is based on three hinges per door.



Min Door Thick-ness	Max Door Mass	X Dim From Door Edge	1 Hinge Width	2 Hinge Length	3 Plate Depth	4 Mortice Depth	5 Mortice Length	Sales Unit	Prod Code
19mm	10kg	3.2mm	12.4mm	45mm	4.7mm	18.2mm	18.3mm	Each	HNCP005
19mm	14kg	3.2mm	12.7mm	60mm	5.2mm	17.8mm	29.9mm		HNCP015
22mm	25kg	4.0mm	15.7mm	70mm	7.0mm	22.8mm	33.3mm		HNCP025
28mm	35kg	4.8mm	18.4mm	95mm	8.3mm	26.4mm	49.8mm		HNCP035
35mm	45kg	6.4mm	24.7mm	118mm	11.0mm	36.6mm	62.7mm		HNCP045
41mm	55kg	6.4mm	27.8mm	118mm	9.0mm	41.0mm	60.4mm		HNCP055
47mm	70kg	7.5mm	33.6mm	139mm	11.1mm	49.3mm	73.3mm		HNCP065



## Single Action



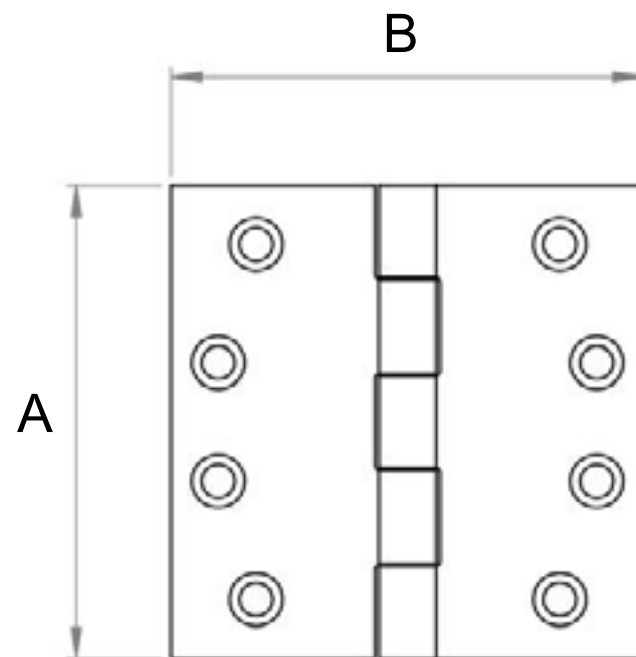
Single action spring hinges for doors subject to medium frequency careful use, but where there is a chance of occasional misuse.

Available in three finishes:-

- Satin stainless steel
- Polished stainless steel
- Electro brass plate

Pictured in satin stainless steel.

These hinges will close the door but are not fully adjustable and not CE marked. They are not a legal substitute for a CE marked, adjustable door closer on a fire door.



Finish	A	B	Sales Unit	Prod Code
Satin stainless steel	102mm	76mm	Pairs	HNS901-SSS
		102mm		HNS903-SSS
Polished stainless steel	102mm	76mm		HNS901-PSS
		102mm		HNS903-PSS
Electro brass	102mm	76mm		HNS901-EB
		102mm		HNS903-EB

## 150mm Double Action

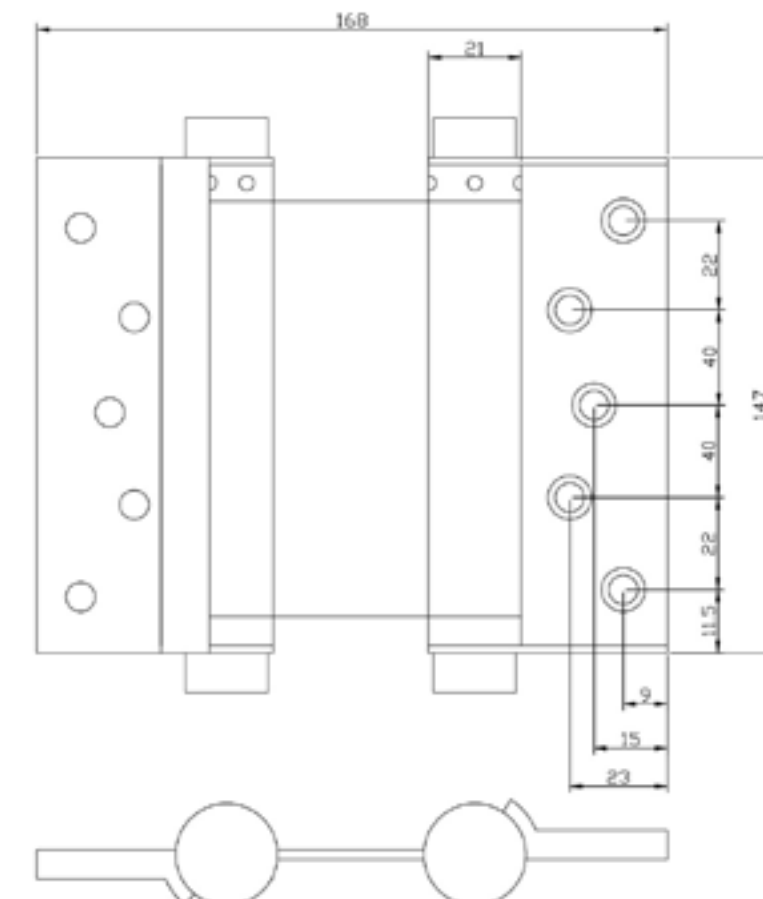
Adjustable tension, double action spring hinges.

Available in 3 finishes.

- Bright zinc plated mild steel
- Electro brassed mild steel
- Grade 304 satin stainless steel

Pictured in bright zinc plated finish.

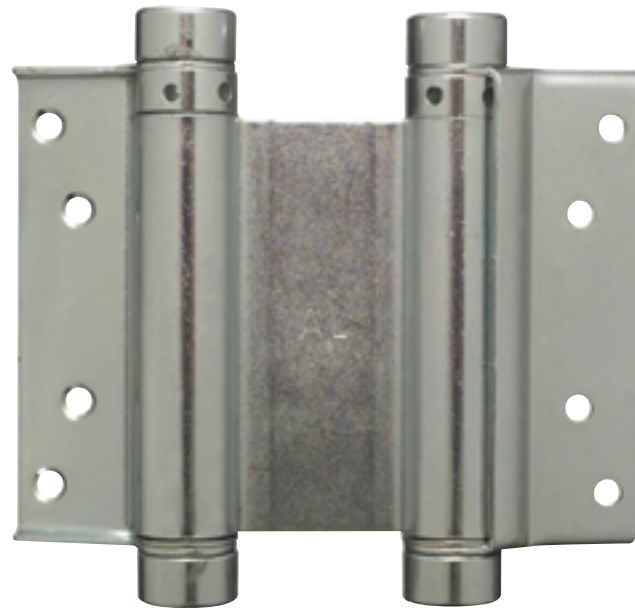
Maximum recommended door mass is 45kg and is based on two hinges per door.



Finish	Sales Unit	Prod Code
Bright Zinc Plated	Pairs	HNSA1150
Electro Brass Plated		HNSA3150
Satin Stainless Steel		HNSA2150



## 125mm Double Action



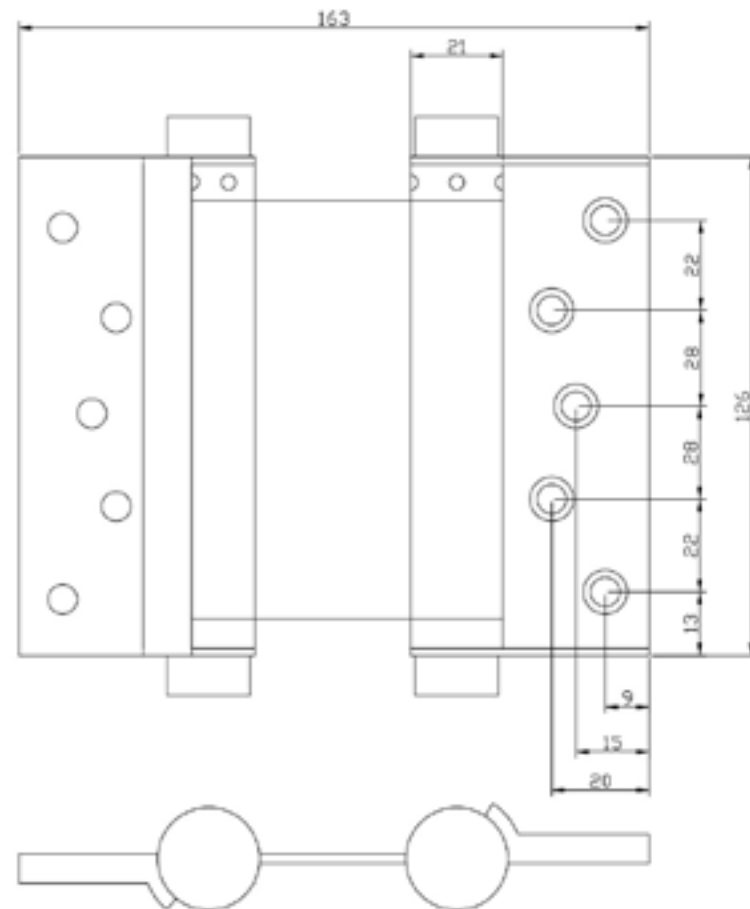
Adjustable tension, double action spring hinges.

Available in 3 finishes.

- Bright zinc plated mild steel
- Electro brassed mild steel
- Grade 304 satin stainless steel

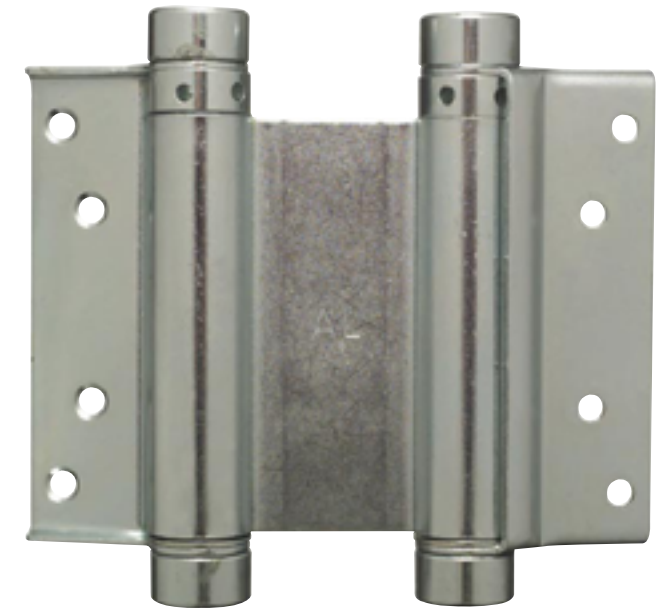
Pictured in bright zinc plated finish.

Maximum recommended door mass is 30kg and is based on two hinges per door.



Finish	Sales Unit	Prod Code
Bright Zinc Plated	Pairs	HNDA1125
Electro Brass Plated		HNDA3125
Satin Stainless Steel		HNDA2125

## 100mm Double Action



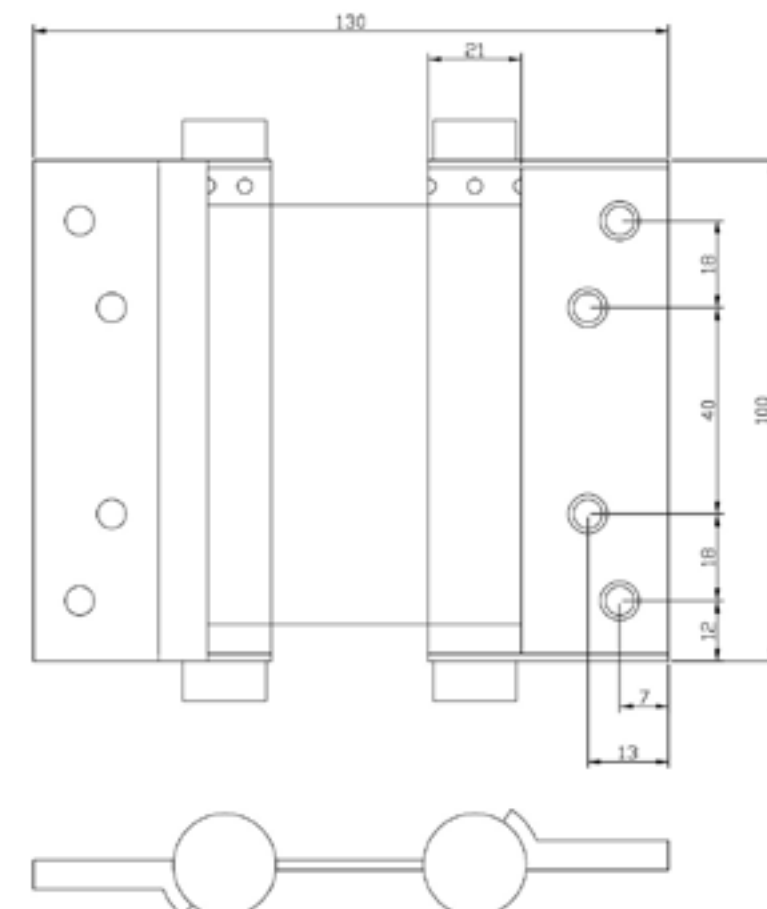
Adjustable tension, double action spring hinges.

Available in 3 finishes.

- Bright zinc plated mild steel
- Electro brassed mild steel
- Grade 304 satin stainless steel

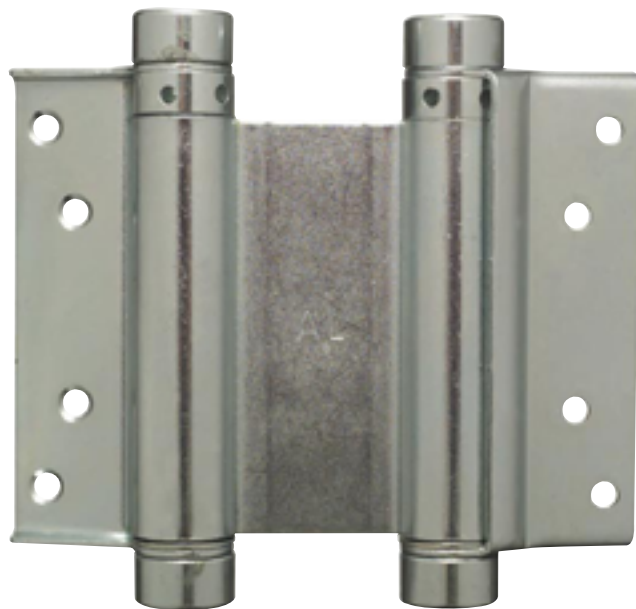
Pictured in bright zinc plated finish.

Maximum recommended door mass is 25kg and is based on two hinges per door.



Finish	Sales Unit	Prod Code
Bright Zinc Plated	Pairs	HNDA1100
Electro Brass Plated		HNDA3100
Satin Stainless Steel		HNDA2100

75mm Double Action



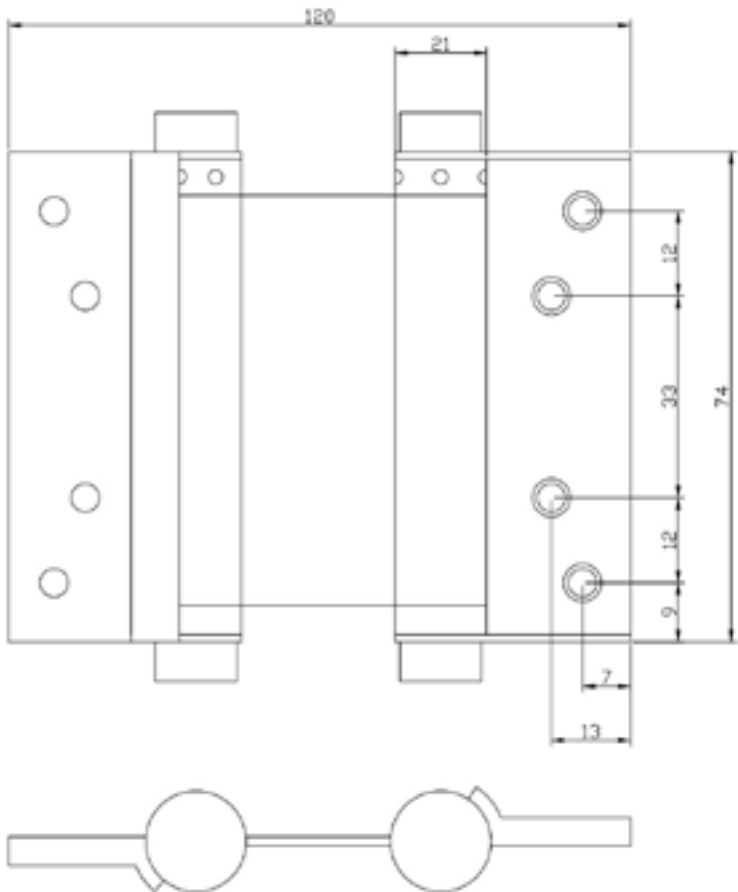
Adjustable tension, double action spring hinges.

Available in 3 finishes.

- Bright zinc plated mild steel
- Electro brassed mild steel
- Grade 304 satin stainless steel

Pictured in bright zinc plated finish.

Maximum recommended door mass is 18kg and is based on two hinges per door.



Finish	Sales Unit	Prod Code
Bright Zinc Plated	Pairs	HNDA1075
Electro Brass Plated		HNDA3075
Satin Stainless Steel		HNDA2075

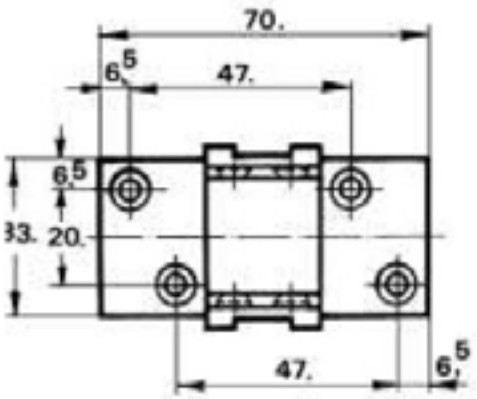
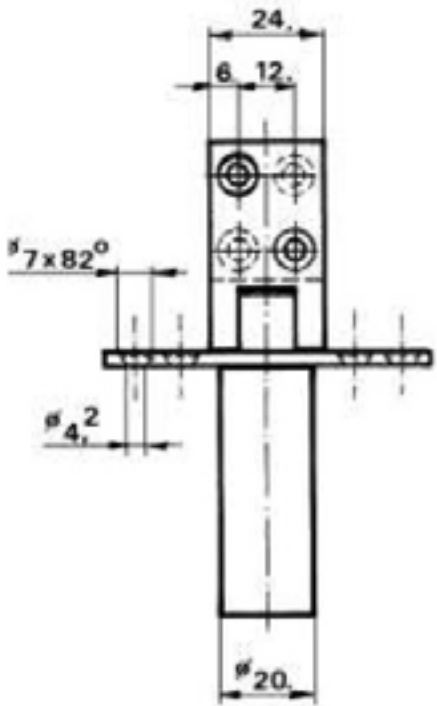
Double Action Saloon

Double action, spring hinge for cowboy saloon type doors.

Version available for doors 19-24mm and 25-30mm.

Finish is nickel plate.

Maximum recommended door mass is 26kg and is based on two hinges per door.



Door Thickness	Sales Unit	Prod Code
19-24mm	Each	SGH01
25-30mm		SGH02

400kg System

High performance pivot system for doors subject to a high frequency of careless use.

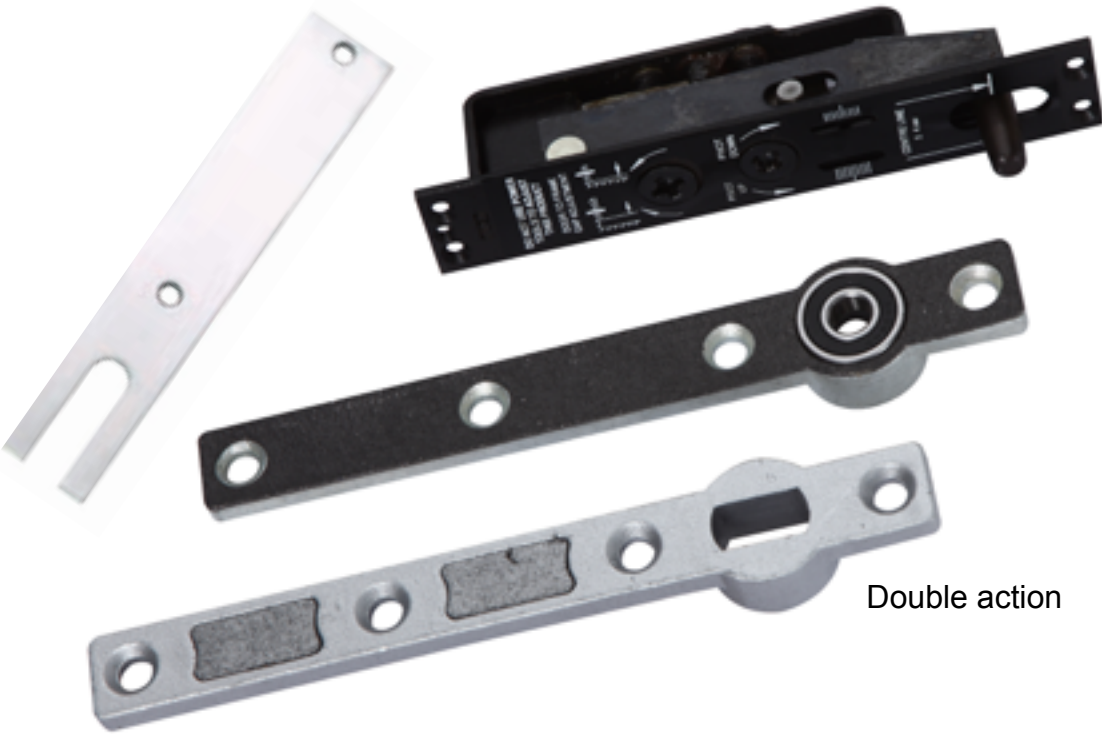
Available in three finishes.

- Satin stainless steel (Grade 316)
- Polished stainless steel (Grade 316)
- Polished brass

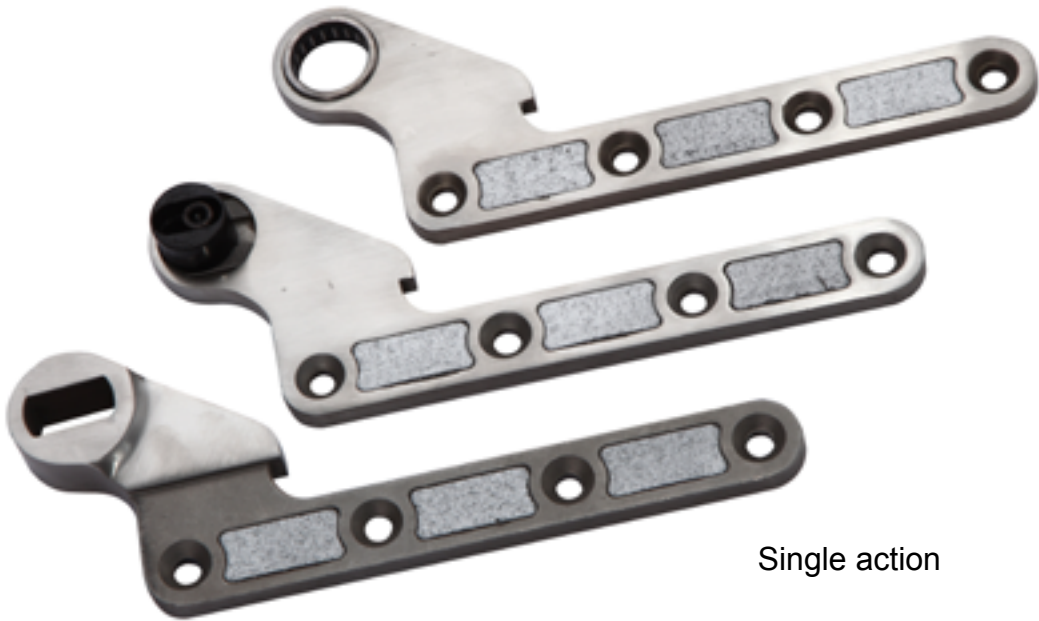
Available for single or double action doors.



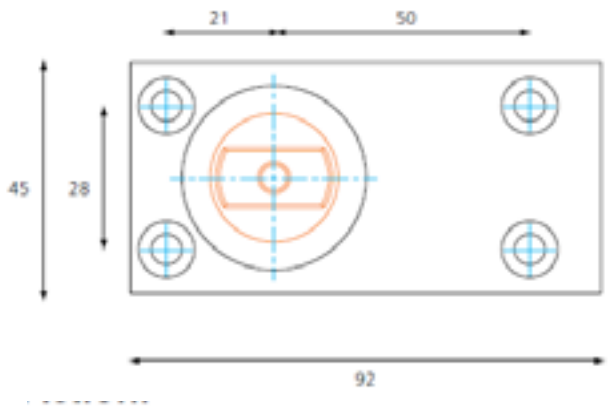
Bottom pivot



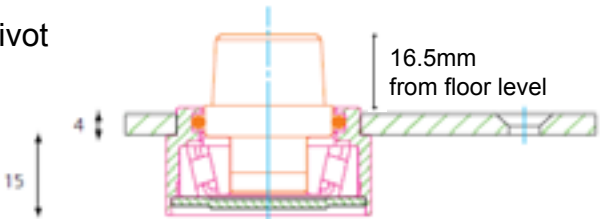
Double action



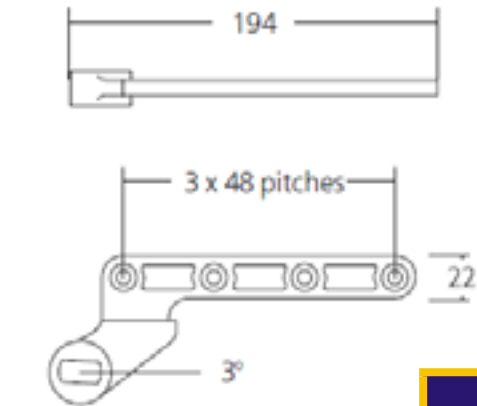
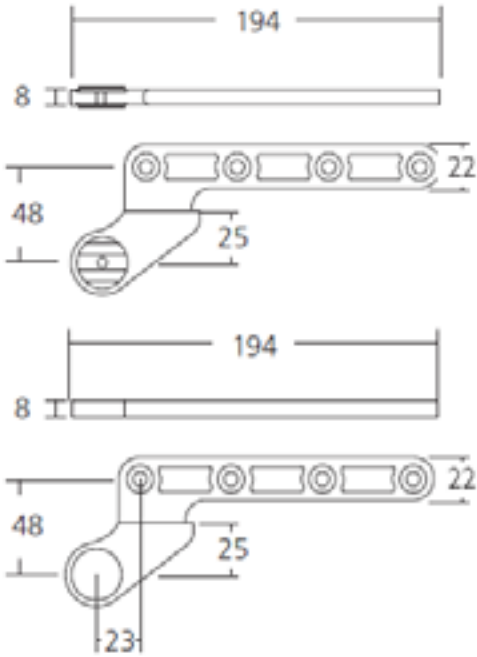
Single action



Bottom Pivot



Single Action

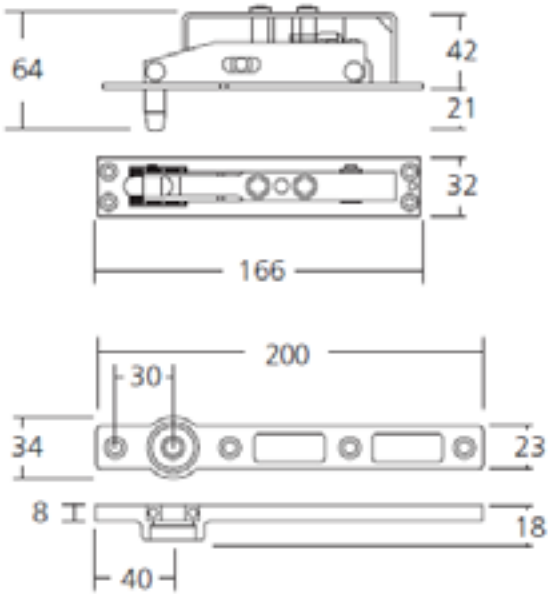


Cover

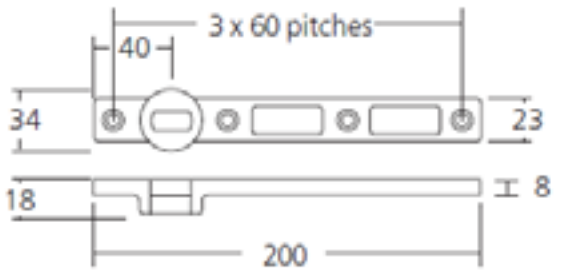


Double Action

Top Centres and Straps



Bottom Straps

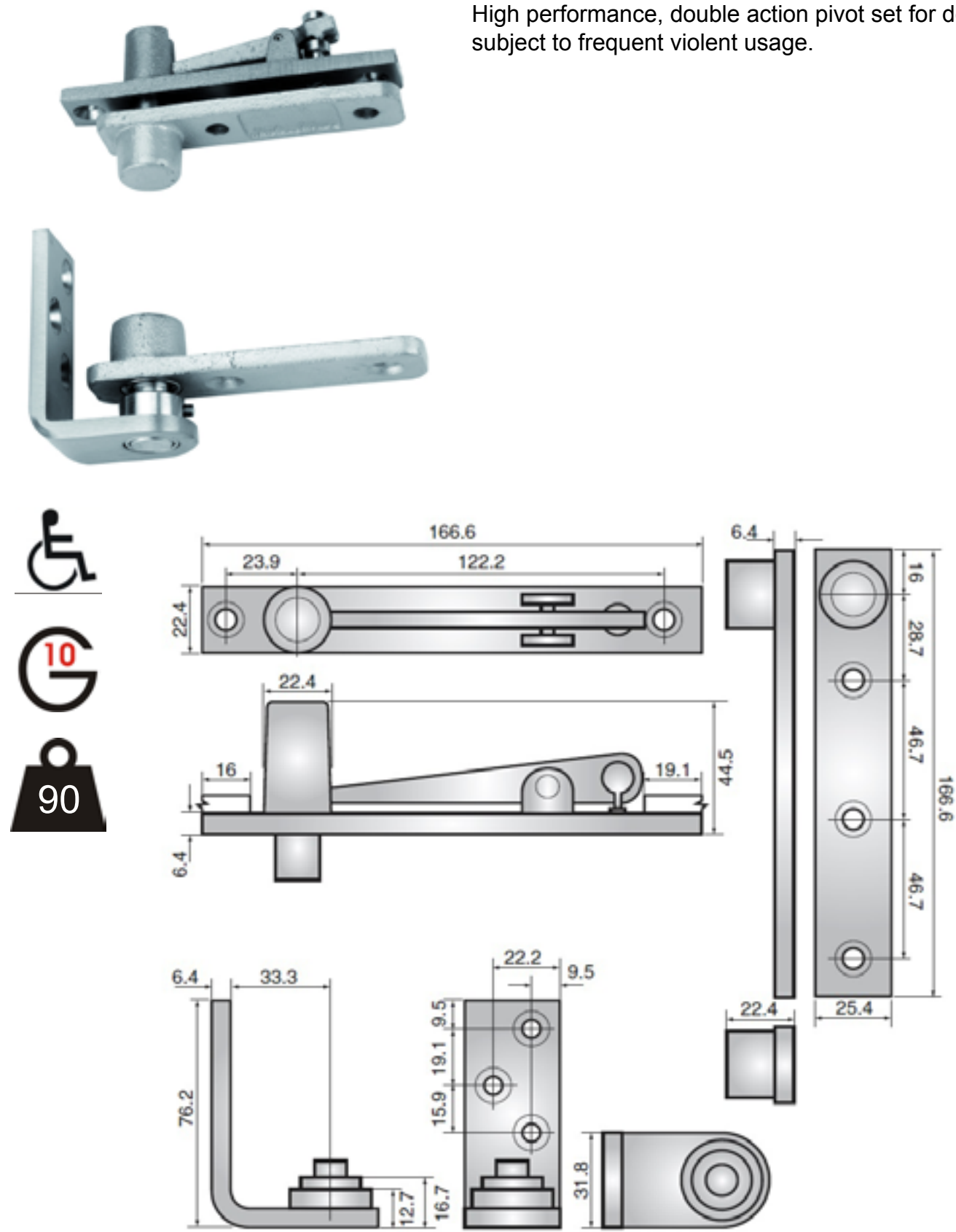


Finish	Double Action Prod Code	Single Action Prod Code
Satin Stainless Steel	FSKIT-8101-SSS	FSKIT-8112-SSS
Polished Stainless Steel	FSKIT-8101-PSS	FSKIT-8112-PSS
Polished Brass	FSKIT-8101-PB	FSKIT-8112-PB



Performance Double Action 90kg

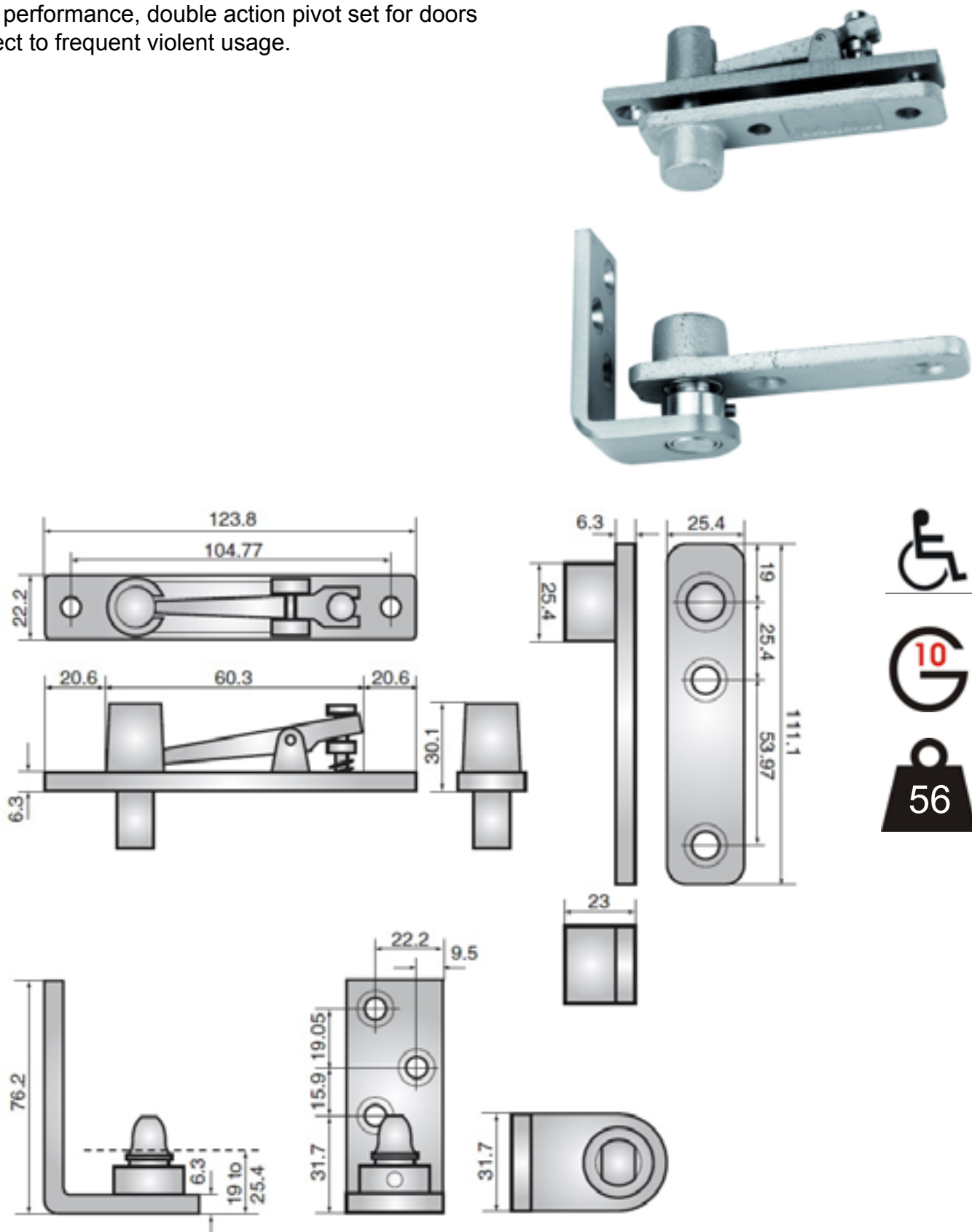
High performance, double action pivot set for doors subject to frequent violent usage.



Sales Unit	Prod Code
Each	FS8001

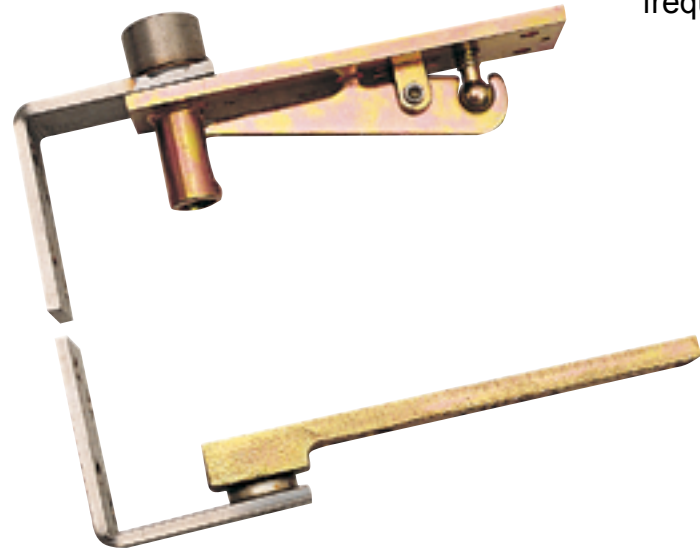
Performance Double Action 56kg

High performance, double action pivot set for doors subject to frequent violent usage.

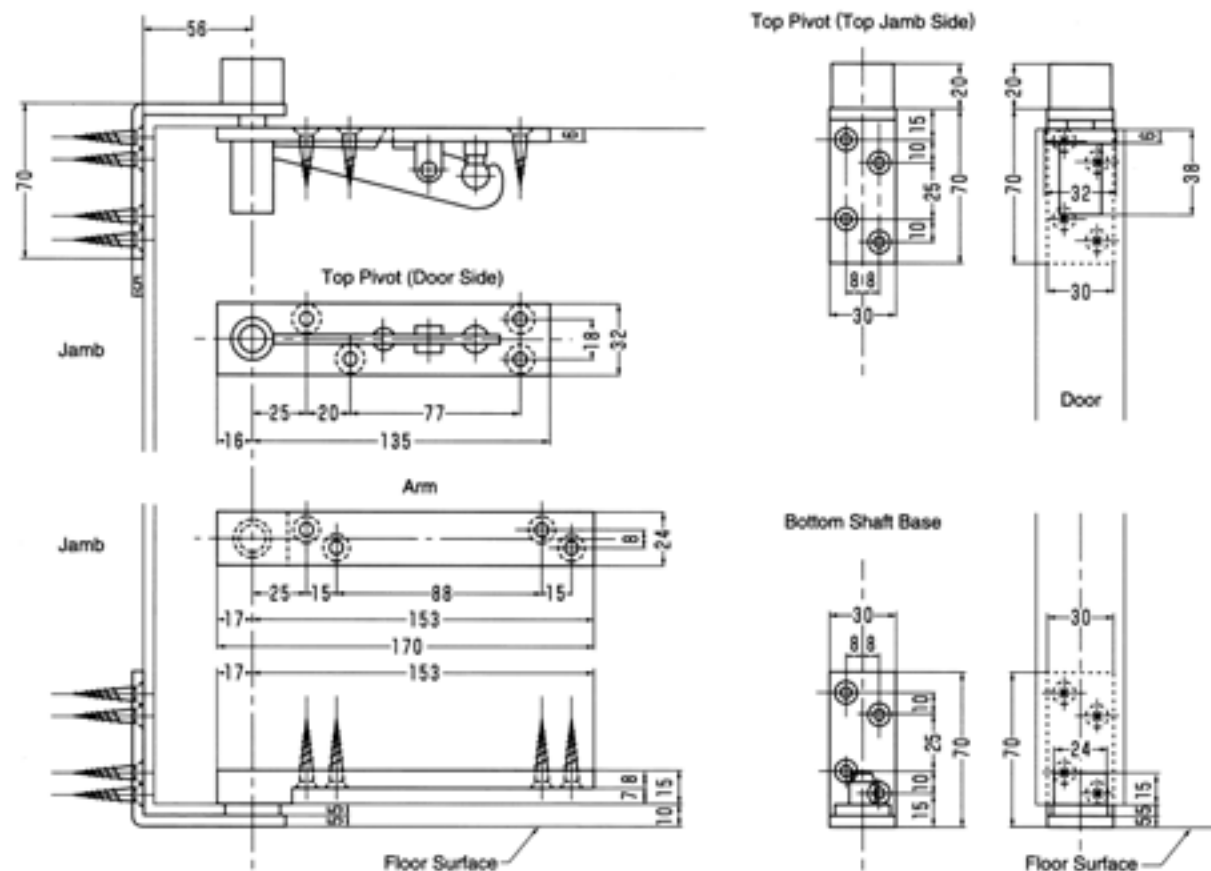


Sales Unit	Prod Code
Each	FS8002

# Double Action 80kg



Double action pivot set for doors subject to a high frequency of careless use.



Sales Unit	Prod Code
Each	FS8519

## Performance Emergency Stop

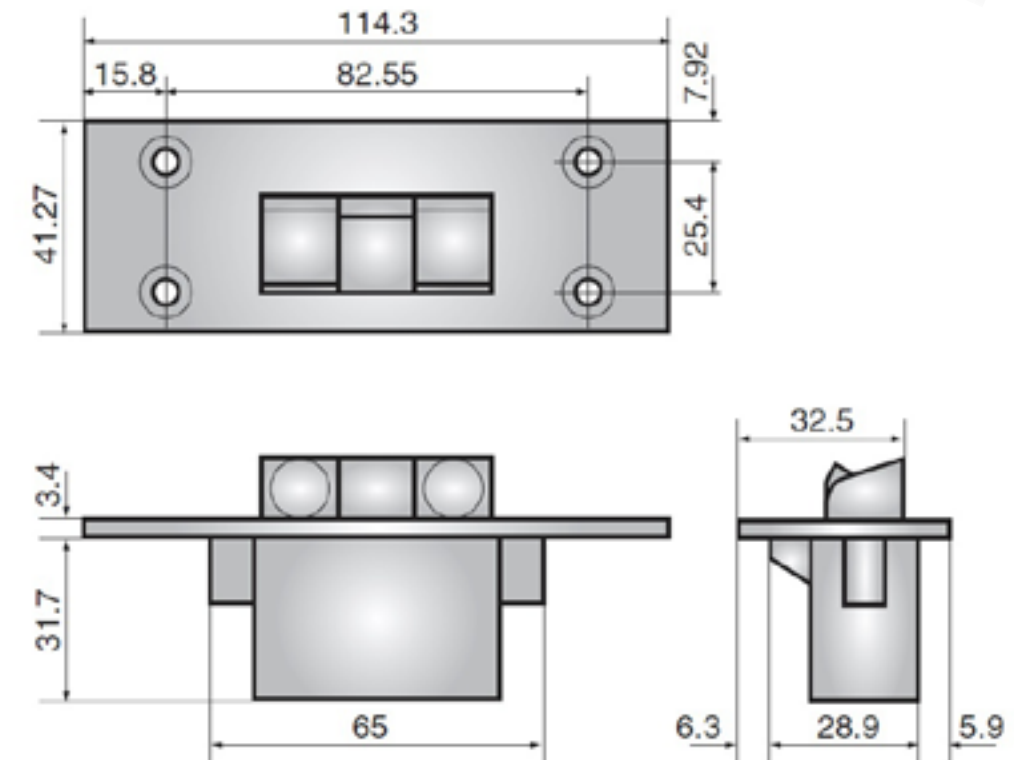
High performance emergency stop for doors subject to frequent violent usage.

The stop is depressed normally and upon release it will default to a deployed (out) position.

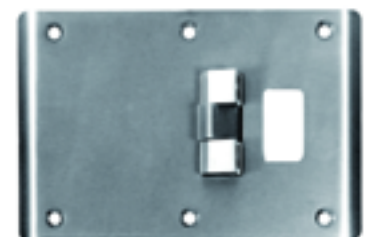
The stop is depressed slightly further than normal and the stop will remain in a held-back position. Repressing the stop will redeploy it.

Manufactured from heavy duty brass and satin chrome plated.

\*It is not necessary to adjust the door's mass beyond Base Mass (as described on page 3) with this product.



Sales Unit	Prod Code
Each	FS8002



Emergency Stop 80kg

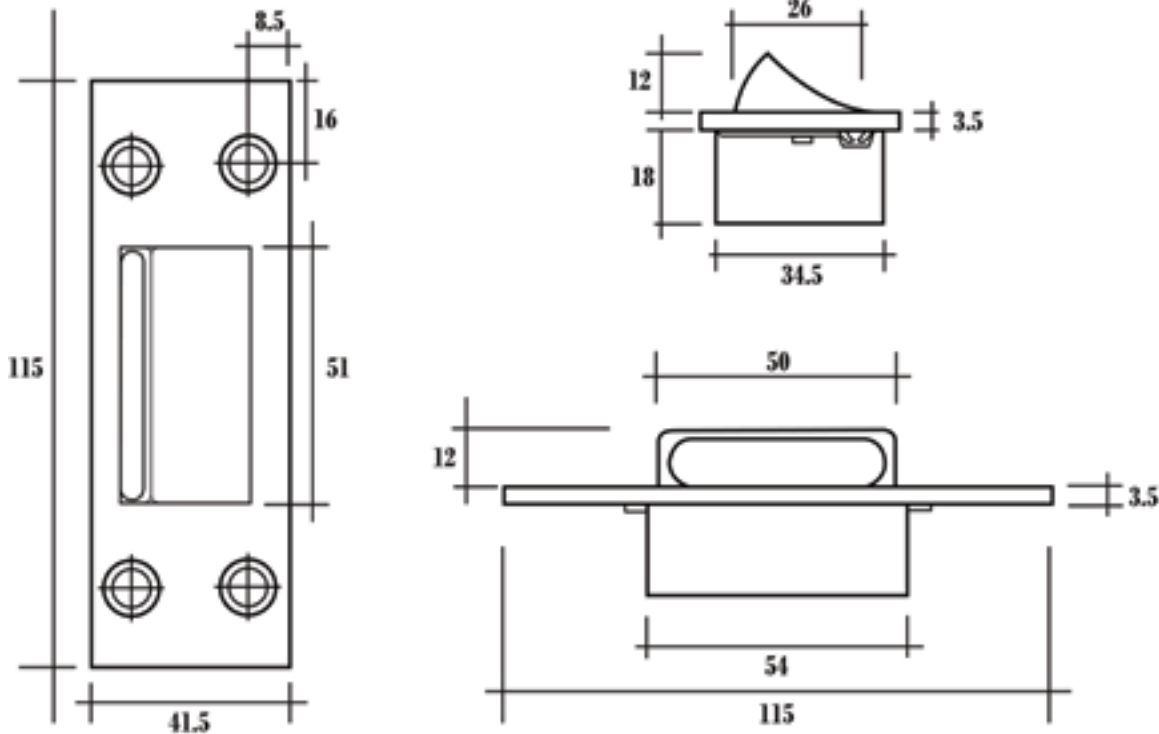
Emergency stop for doors subject to a high frequency of careless use.

The stop is depressed and upon release it will default to a deployed (out) position.

There is no hold-back facility.

Manufactured from 304 stainless steel.

\*It is not necessary to adjust the door's mass beyond Base Mass (as described on page 3) with this product.



Sales Unit	Prod Code
Each	FS8601

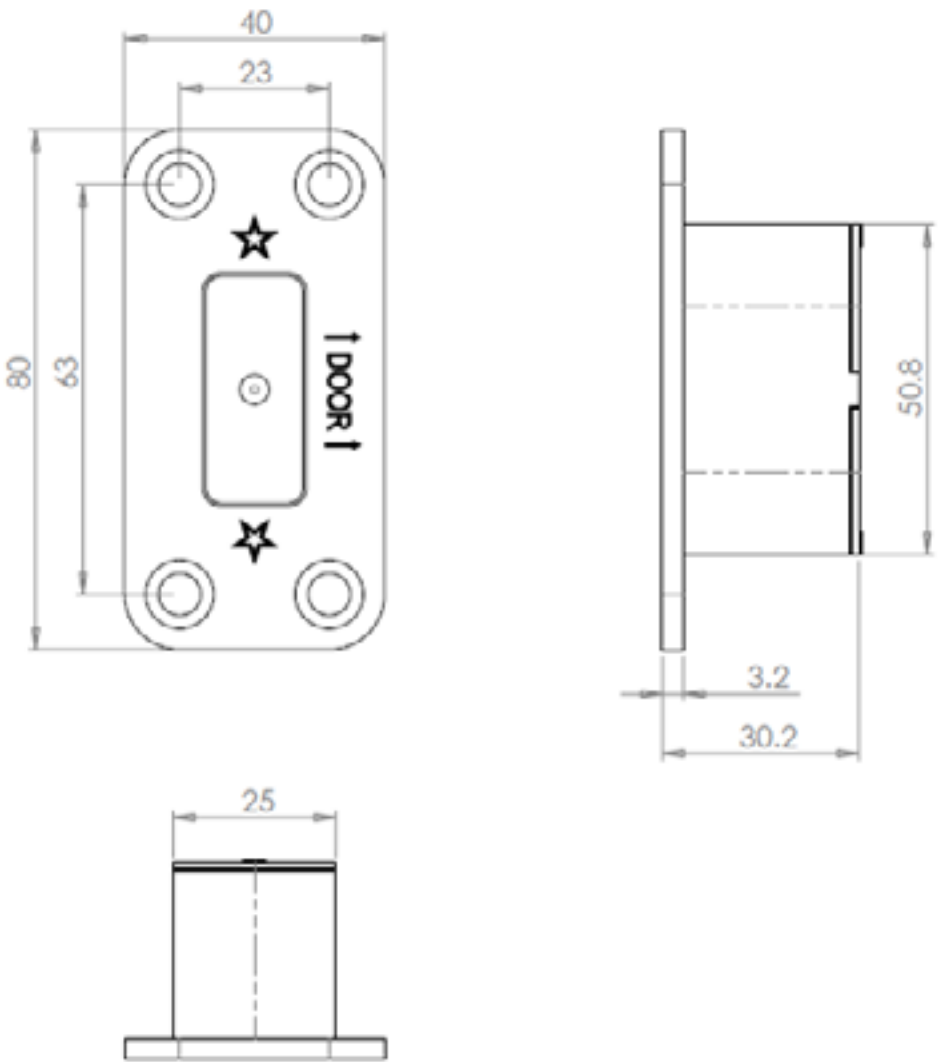
Emergency Stop with Holdback 80kg

Emergency stop for doors subject to a high frequency of careless use.

The stop is depressed and will default to an heldback position. The stop is redeployed by pressing a pointed object, such as a biro, into the centre point.

Manufactured from grade 316 stainless steel.

\*It is not necessary to adjust the door's mass beyond Base Mass (as described on page 3) with this product.



Sales Unit	Prod Code
Each	FS8622