



## Architectural Ironmongery Catalogue

# Access Control

# Fire Detection & Alarm





Hardwired Systems - Pages 4-23



Wireless Systems - Pages 24-27

Contents

Contents	Page Numbers
<b>Access Control</b>	
Standalone Hardwired System	4-5
Networked Hardwired System	6-11
Electric Lock	12
Electro Magnetic Locking	13-15
Electric Strikes	16-17
Buttons, Call Points & Key Switches	18-21
PSUs	22
Accessories	23
Wireless Systems	24-27
<b>Fire Detection, Alarm &amp; Fire Fighting</b>	
Fire Detection and Alarm Systems	28-31
Fire Extinguishers & Blankets	31-35

# Stand Alone Hardwired System



Our stand alone keypads and combined keypad/proximity reader provide basic access control by code for low risk entrances or internal doors. All the electronics are built into the keypad housing. The keypad controls a relay which operates an electronic lock or can be used to trigger an automatic door operator.

Our standalone keypad, and combined keypad/proximity reader are compatible with all of our electric locks, magnets, strikes, buttons and accessories on pages 12-23.

- All our keypads have the following features:
- Different length codes between 2 and 8 digits
  - Built-in timer for output relay
  - Input for Push to Exit button
  - Internal or external versions available
  - Single or multiple code options



A combined keypad and proximity reader which is suitable for internal or external applications for medium or heavy duty applications.

Features include:

- Robust metal housing and buttons
- Weather resistant to IP65 rating
- Programmed using master code
- Combined PIN and Proximity reader allows operation by PIN only, Proximity only or both
- Operating voltage 12-24v DC or 12v AC (switchable)
- 1 to 1200 user cards or codes of 4 - 8 digits
- Two volt free output relays rated 2A at 24v DC
- Dims.135(h) x 58(w) x 27mm(d)

Description	Prod Code
Keypad/Prox	DIGA101

# Stand Alone Hardwired System

A keypad which is suitable for internal or sheltered external applications for medium use applications.

Features include:

- Metal housing and buttons
- Programmed using master code
- Operating voltage 12v AC or DC
- 1 to 50 user codes of 2 - 8 digits
- Volt free output relay rated 2A at 12v DC
- Dims.116(h) x 74(w) x 22mm(d)



Description	Prod Code
keypad	DIGA102



Description	Prod Code
Fobs	DIGA198



Description	Prod Code
Cards	DIGA199



Fobs and cards only compatible with DIGA101 on page 4



# Networked Hardwired System



# Networked Hardwired System

Our Networked System is controlled by a powerful software package which provides an exceptionally user-friendly tool to control the network from a central PC or laptop. Additional workstations may be added to offer ease of management (for example, different locations in a multi-site complex or multi-building application) with different levels of control being allocated to each system manager.

Software control providing flexibility and security without compromise.

Our networked hardwired systems is compatible with all of our electric locks, magnets, strikes, buttons and accessories on pages 12-23.

The system offers the following primary features:

- Alarm monitoring of security and fire and is compatible with our Fire Detection and Alarm system on Pages 28-31.
- Extensive alarm, transaction, card holder, user log and roll call reports providing essential management and security information as required
- Flexible access and user permissions
- Multiple workstations using TCP/IP access
- Multi-site management
- The ability to use different reader technologies on the same network
- Unlimited networks on the same system

The software offers a range of options to create a system to suit your application from a basic access control system through to a truly advanced system with site plans, lift control, building energy control and car park management.

The software options incorporate:

- Access permissions for individuals or user groups
- Administrative rights may be given via any workstation on the network
- Access rights are updated instantly
- Unlimited number of access levels with shift patterns, holidays and visitor permissions on an individual or group level
- Real time event viewing (allowing immediate control and monitoring)
- Fire alarm integration and is compatible with our Fire Detection and Alarm system on Pages 28-31.
- Emailed roll call muster report in the event of a fire alarm
- Car park count control and allocation
- Time sheet and reporting
- On-screen site graphics
- Building energy control
- Biometrics integration
- Anti pass-back



## Networked Hardwired System - Readers



Mifare reader offers a clean design which fits a single gang back box. This ABS plastic reader is encapsulated and suitable for internal and external areas. Audible and visual indication of card status.

- Operating voltage 9-16v DC
- Card read range 45mm
- Fob read range 25mm
- Dims.83(h) x 86(w) x 16mm(d)

**Prod Code**

DIGB101



Mifare readers in ABS plastic are encapsulated and suitable for internal and external installations. Audible and visual indication of card status.

- Operating voltage 9-16v DC
- Card read range 45mm
- Fob read range 25mm
- Dims.83(h) x 45(w) x 16mm(d)

**Prod Code**

DIGB102



Mifare reader offers a clean cut design, constructed of steel. The reader is encapsulated and suitable for vandal resistant areas internally and externally. Audible and visual indication of card status.

- Operating voltage 9-16v DC
- Card read range 45mm
- Fob read range 25mm
- Dims.120(h) x 58(w) x 20mm(d)

**Prod Code**

DIGB103

## Networked Hardwired System - Readers

Mifare reader in ABS plastic is encapsulated and suitable for internal installations. Audible and visual indication of card status.

- Operating voltage 9-16v DC
- Card read range 45mm
- Fob read range 25mm
- Dims.110(h) x 50(w) x 18mm(d)

**Prod Code**

DIGB104



Innoprox readers provide a clean cut design constructed of tough fire resistant polycarbonate. The reader is encapsulated and suitable for internal and external installations. Audible and visual indication of card status.

Dual reader software enables two readers on a single door with in/out reporting.

- Operating voltage 7-25v DC
- Card read range 76mm
- Fob read range 38mm
- Dims.103(h) x 51(w) x 17mm(d)

**Prod Code**

DIGB105



Innoprox long range readers provide a slim ergonomic design, constructed for clean room areas and doors where there is high speed pedestrian traffic. Audible and visual indication of card status.

- Operating voltage 12v DC
- Card read range 220mm
- Fob read range 120mm
- Dims.330(h) x 330(w) x 10mm(d)

**Prod Code**

DIGB106





Networked Hardwired System - Readers



Reader or reader/keypad offers a clean design which fits a single gang back box. These readers are suitable for internal use.

- Operating voltage 9-16v DC
- Card read range 45mm
- Fob read range 25mm
- Dims 83(h) x 83(w) x 18mm(d)

Description	Prod Code
Reader (White)	DIGB109W
Reader/Keypad (White)	DIGB110W
Reader (Black)	DIG109B
Reader/Keypad (Black)	DIG110B



Description	Prod Code
Fobs	DIGB198



Description	Prod Code
Cards	DIGB199

Networked Hardwired System - Readers



Ideal for use on applications where a higher level of security is required this system incorporates iris reader technology. The readers are motorised to allow the lens to focus on the eyes, adjusting to a wide range of heights. This is more convenient for the user and reduces the time required to make an accurate reading.

The system is capable of matching 2,500 images per second in order to identify the user. Once identified a signal is transmitted to the controller for quick and reliable access.

Approved for National Infrastructure installations and vandal resistant external readers available.

- Operating voltage 9-16v DC
- Read range 200mm
- Read speed 2-5 seconds
- Dims.100(h) x 230(w) x 80mm(d)

Description	Prod Code
Desk Mounted	DIGB107
Wall Mounted	DIGB108

# Hardwired Systems - Electric Lock



For wooden or metal doors, with deadbolt and anti-friction bolt, fail locked/fail unlocked. Outside handle operates when engaged by solenoid. Inside handle operates at all times.

Features include:-

- Easily reversible trigger bolt, suitable for all hands of door
- Quick change fail locked to fail unlocked
- Deadbolt and anti-friction bolt deadlock when door closes
- Meets EN179 for emergency exit doors and EN1634-1 for fire resistance when used with correct exit hardware
- Tested to mechanical resistance EN12209
- Key override at all times

Monitoring of:-

- Request to exit (RQE) on inside handle
- Bolt position
- Door position
- Cylinder operation

Prod Code  
ABLOY560

Comes complete with lever furniture and security escutcheons to EN179.

# Hardwired Systems - Electro Magnets



Shear lock offers a high level of security and has the following features:

- Mortice shear lock is fully concealed and can be fitted to timber or metal doors (min. door thickness 44mm)
- Suitable for single or double swing, single or pairs of doors
- Minimum holding force 2000 lbs (dependent on installation details)
- Can be used horizontally in frame transom or vertically on door/frame jambs
- Fire rated version available
- Door and lock status monitoring
- CE marked
- Black/Silver finish
- Operating voltage 12-24v DC



Dimenions	Prod Code
Standard	DIGA231
FD30	DIGA232



## Hardwired Systems - 200kg Electro Magnets

The Deedlock range of electromagnetic locks is suitable for a wide range of applications used in conjunction with either an access control system or audio/video entry system. Features of the ranges include:

- Low maintenance with no moving parts
- Simple and quick installation and suitable for timber or metal doors
- Slimline profile produces a neat installation
- Versions available with built-in timer (0 - 90 seconds)
- Suitable for single inward or outward opening doors
- Minimum holding force of **500lbs**
- Dual voltage, 12 or 24v DC selectable on-site
- Monitored versions available
- CE marked
- Satin anodised aluminium finish
- Safety bolts which prevent magnet from detaching from bracket
- Glass door bracket available
- Housings available



Dimenions	Prod Code
Standard	DIGA211
Monitored	DIGA212



Dimenions	Prod Code
Standard	DIGA221
Monitored	DIGA222



Dimenions	Prod Code
L & Z Bracket	DIGA291



Dimenions	Prod Code
Architectural L & Z Bracket	DIGA293

## Hardwired Systems - 500kg Electro Magnets

The Deedlock range of electromagnetic locks is suitable for a wide range of applications used in conjunction with either an access control system or audio/video entry system. Features of the ranges include:

- Low maintenance with no moving parts
- Simple and quick installation and suitable for timber or metal doors
- Versions available with built-in timer (0 - 90 seconds)
- Suitable for inward or outward opening doors
- Minimum holding force of **1100lbs**
- Dual voltage, 12 or 24v DC selectable on-site
- Monitored
- IP65 external version available
- CE marked
- Satin anodised aluminium finish
- Safety bolts which prevent magnet from detaching from bracket
- Glass door bracket available
- L & Z Bracket is not compatible with IP65 magnet.



Dimenions	Prod Code
Monitored	DIGA223



Dimenions	Prod Code
Monitored	DIGA213



Dimenions	Prod Code
L & Z Bracket	DIGA292



Dimenions	Prod Code
IP65 Monitored	DIGA214



## Hardwired Systems - Electric Strikes



A high performance mortice electric release designed for use with mortice latches which has the following features:

- Suitable for medium to high traffic applications
- Fail locked and fail unlocked versions available
- Available for timber or metal doors
- Jaw strength up to 450 kg
- 12v or 24v DC versions available
- Comes complete heavy duty hardened steel faceplate.

Dimenions	Prod Code
Fail Safe 12v	DIGA204
Fail Secure 12v	DIGA205



An ANSI mortice electric release designed for use with mortice latches which has the following features:

- Suitable for medium traffic applications
- Fail locked and fail unlocked version (switchable)
- ANSI Mortice versions suitable for latches up to 15mm throw
- Jaw strength up to 1000 lbs
- 12v or 24v DC operation (switchable)
- Comes complete with ANSI long and ANSI short stainless steel faceplates

Prod Code
DIGA203

## Hardwired Systems - Electric Strikes

Basic electric releases which have the following features:

- Suitable for low to medium traffic applications
- Fail locked and fail unlocked versions
- Rim releases suitable for rim nightlatches
- Suits latches with 12mm maximum throw
- Jaw strengths up to 500 lbs
- Operating voltage 12v DC
- Grey powder coated finish
- Come complete with mortice fixing kit and rim fixing kit

Dimenions	Prod Code
Fail Safe	DIGA201
Fail Secure	DIGA202



A mortice electric releases designed for use with mortice escape sashlocks and has the following features:

- Suitable for low to medium traffic applications
- Fail locked
- Jaw strength 880 lbs
- Operating voltage 12v DC
- Stainless steel faceplates
- This product is handed

Dimenions	Prod Code
Left Hand	DIGA206-L
Right Hand	DIGA206-R



Left hand

Right hand



Prod Code  
DIGA301

Satin stainless steel door release green button. Flush mount single gang back box as standard. A surface mount box is available.



Prod Code  
DIGA304

Large door release button. Surface mount as standard, a flush mount version is also available.



Prod Code  
DIGA305

Satin stainless steel touch-to-release door release button. Flush mount single gang back box as standard. A surface mount box is available.



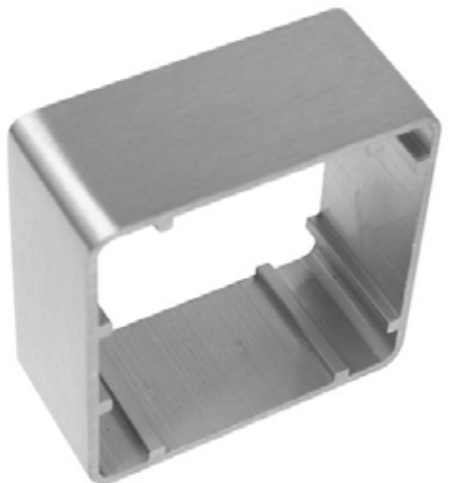
Prod Code  
DIGA306

IP65 door release button. Surface mount as standard.



Prod Code  
DIGA302

Emergency door release resettable call point with clear cover, double pole contacts and LOCK and UNLOCK status display. Surface mount complete with fixing and reset key in green.



Prod Code  
DIGA391

Satin stainless steel surface mount box. Suitable for all our single gang surface mount buttons.





Prod Code  
DIGA303

A combined door release green button and emergency door release resettable call point with clear cover.

Double pole contacts and LOCK and UNLOCK status display. Surface mount complete with fixing and reset key in green..



A combined “touch free” door release button and emergency door release resettable call point with clear cover.

Double pole contacts and LOCK and UNLOCK status display. Surface mount complete with fixing and reset key in green.

Satin stainless steel key switches, available momentary or maintained. Flush mount single gang back box as standard. A surface mount box is available.



Prod Code  
DIGA311

Satin stainless steel key switches, available momentary or maintained. Flush mount architrave back box as standard. A version is available c/w a surface mount box. For more discrete key switching.



Dimenions	Prod Code
Flush	DIGA312
C/W Back Box	DIGA313

Satin stainless steel euro provile key switches, available momentary or maintained. Flush mount single gang back box as standard. A surface mount box is available.

- Can be incorporated into a masterkey system
- Can be engraved to your requirements



Hardwired Systems - PSUs and Batteries



Our power supply units are switch mode units 12v DC voltage (24v model also available) and load outputs from 1 to 5 Amps. These cost effective units are ideal for use in access control or general security, intruder alarm or fire applications.

- High efficiency electronics for reduced running costs and lower operating temperatures
- Installer safe design with all high voltage electronics fully shrouded
- Full electronic short circuit and overload protection on load output under mains operation
- Mains transient protection
- "Lid Open" and REAR anti-vandal tamper detection
- Mains transient protection
- Dims. 247(h) x 207(w) x 77mm(d)
- Can be used to house the batteries below

Dimenions	Prod Code
1 amp	DIGA401
2 amp	DIGA402
3 amp	DIGA403
4 amp	DIGA404
5 amp	DIGA405

The power supply units meet the essential requirements of the following European Directives:

- Low Voltage 2006/95EC
- EMC2004/108/EC
- WEEE 2002/96/EC
- RoHS 2002/95/EC



12v 7 amp hour batteries for use in the above PSUs.

Prod Code  
DIGA411

Hardwired Systems - Accessories



Multipurpose relay 12-24v AC or DC  
Double pole (5A @ 250v AC or 30v DC)

Fire switching relay 12-24v DC  
Single pole (5A @ 250v AC or 10A @ 24v DC)

Description	Prod Code
Multi Purpose	DIGA901
Fire Switching	DIGA903



Door release timer 12v DC - 15 seconds

Prod Code  
DIGA902



Dimenions	Prod Code
Concelaed Loop 288x24x17mm	DIGA911



Description	Prod Code
Surface Loop 400mm	DIGA912
Surface Loop 560mm	DIGA913





## Wireless System - On Door



Our On-Door system is a wire free, stand alone, intelligent lock that uses MIFARE® proximity contactless technology.

It provides an easy to use, secure access solution right on the door. Our flexible system architecture enables On-Door systems to be created to suit any installation from a simple one or two door set up to a fully networked control system providing 'real time' control of access permissions and monitoring.

Comes complete with a quality lock and is fully fire tested.

A wall reader is also available for doors where magnets are required.

A compatible locker system is available within this range.

To specify this product range generically use **DIGC1 Range**.

## Wireless System - In Door



Our In-Door wire free access control system, where all components can also be neatly housed within the door, creating a virtually concealed access control system.

Offering all the operational benefits of the On-Door system, the In-Door installation creates a discreet and simple aesthetic which is hardware independent. You choose your own handles and escutcheons, and we can incorporate this system into an existing or new master key system.

Comes complete with a quality lock and is fully fire tested.

We offer a range of discs and bespoke products to form the area of the door where the card is offered to gain access.

To specify this product range generically use **DIGC2 Range**.

## Wireless System - Locker



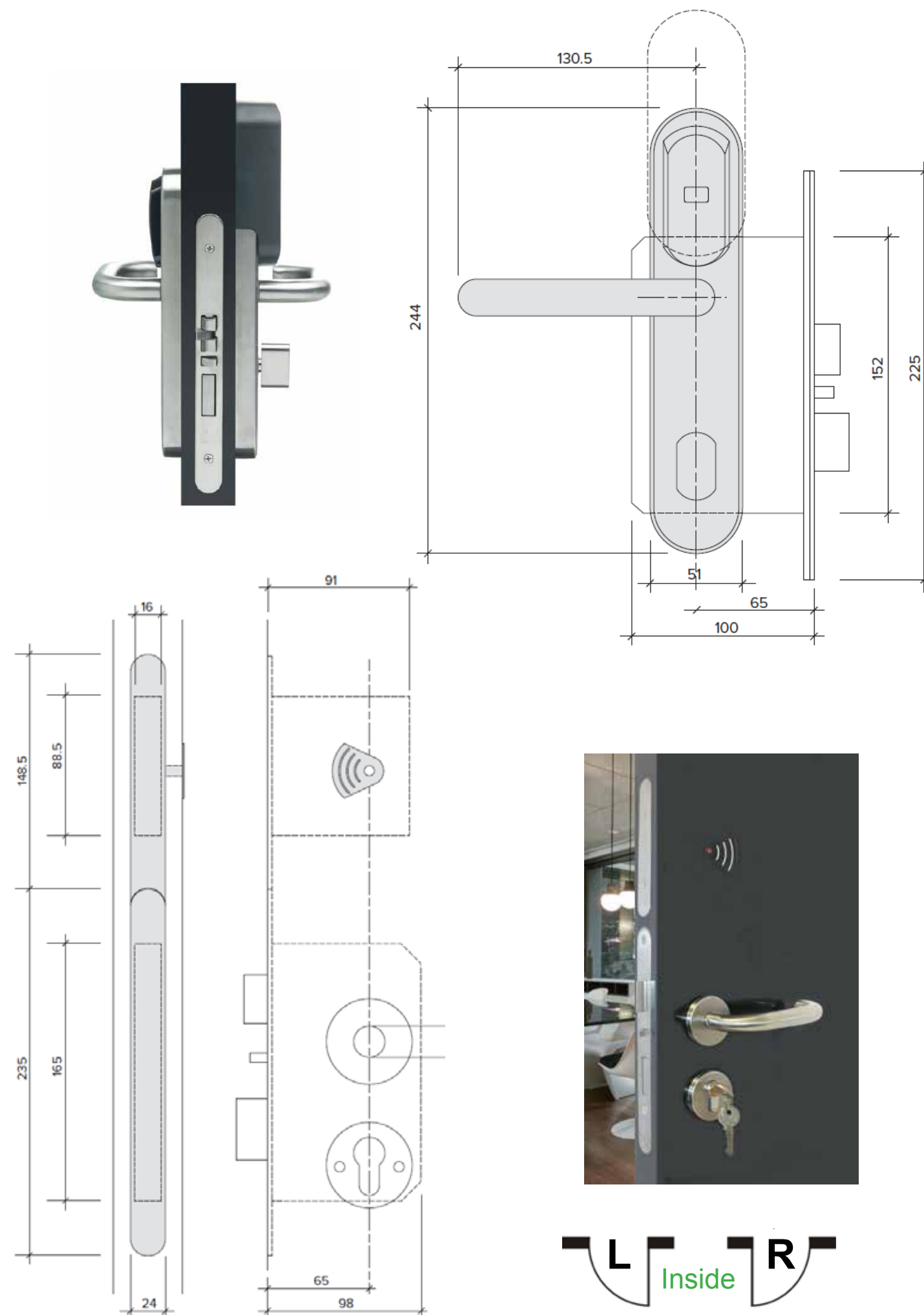
The On-Locker Lock provides a high level of security and ease of operation for lockers and cupboards using MIFARE™ proximity

The Locker Lock provides a new level of security for both “Free Use” and “Assigned Use” lockers. It has two locking modes “Manual” and “Automatic”. The manual mode requires the card to be re-presented to re-lock the locker, whilst the lock will re-lock after 4 seconds in the automatic mode.

Convenient for both user and management, with the industry-leading technology, and an elegant design, On-Locker Lock is suitable for every style of locker room and can be integrated within a complete On-Door/In-Door access control system.

To specify this product range generically use **DIGC3 Range**.

## Wireless System - Info







This versatile and cost effective fire alarm system used the destectors, sounder and call points on the following spread. The panels incorporate a Multipoint detection system using smoke and heat detectors with built-in sounders, allowing the whole system to be installed using two fire cables.

For applications such as offices, shops, care homes, multiple occupancy/flats and ware-houses/commercial premises.

**TwinflexPro - Two Wire, 2, 4 or 8 Zone Fire Detection Panels & PSUs (opposite page)**

Fire alarm panels on the opposite page incorporate Multipoint detection system using smoke and heat detectors, sounders etc on the following spread. This allows the whole system to be installed using two fire cables. (Requires 140 Battery Pack)

Certification BS5839 EN54

**Feature & Benefits**

- Ability to differentiate between call point or detector alarms
- All devices have built-in end-of-line monitoring devices
- 7 modes of detection
- Checkpoint alarm verification procedure
- Up to 32 devices per zone
- 2 and 4 zone panels are controlled by access code
- Allows detectors and sounders to be installed on the same pair of wires
- Walk Test facility
- 72 hour standby
- Up to 8 repeater units can be connected to repeat information from, and interrogte, the system or perform system controls (via RS485 cable).
- Input/output module available to interface to existing systems



Description	Prod Code
2 Zone Panel	FIRE102

Description	Prod Code
4 Zone Panel	FIRE104



Description	Prod Code
8 Zone Panel	FIRE108

Description	Prod Code
Repeater	FIRE199
Input/Output Module	FIRE198

## Fire Detection & Alarm



Dual Watch Call Point is resettable by key, negating the requirement for additional replacement glass. Certification EN54 Parts 3 and 11

Used to activate a system when the detectors have not been activated. Feature & benefits include:

- Available with or without Sounder
- Supplied with an LED for indication of normal operation and alarm
- Resettable element - no replacement Glass necessary
- Reset using the key provided
- Can be tested using the test key or by pressing.
- Audible warning with an optional full specification built-in sounder offering 7 different sound patterns
- IP65 version available

Description	Prod Code
Internal No Sounder	FIRE201
Internal Built-in Sounder	FIRE202
IP65 No Sounder	FIRE203
IP65 Built-in Sounder	FIRE204



ASD Smoke and Heat Sensors

Certification EN54 Part 3 and Part 4

Used with zone panels to detect heat or smoke

Features & benefits include:

- Large range of sounders and strobes available
- Come complete with base

Description	Prod Code
No Sounder	FIRE205
Built-in Sounder	FIRE206



Description	Prod Code
Built-in Sounder & Strobe	FIRE207

## Fire Detection & Alarm

Flash Point Strobe Sounders

The Flash Point Strobe offers visual indication directly from the 2-wire zone, complete with a sounder.

Certification EN54 Part 3

For visual indication of a fire alarm being activated.

Features & benefits include:

- May be fitted inline with detectors
- Sounder incorporated
- 90dB (A) Sounder
- IP55 version available



Description	Prod Code
Sounder & Strobe	FIRE208



Description	Prod Code
IP55 Sounder & Strobe	FIRE209

Twinflex Sounders

The Twinflex Sounder is ideal for higher sound output requirements.

Certification EN54 Part 3

Used to sound an alarm in areas that do not require automatic detection technology.

Features & benefits include

- The standalone Hatari sounder can be utilised where extra sound output on a zone is a requirement
- Standalone comes complete with base
- May be fitted inline with detectors
- IP54 version available



Description	Prod Code
Standalone Sounder	FIRE210



Description	Prod Code
IP54 Sounder	FIRE211



Fire Extinguishers

Our range of compliant fire extinguishers comply with all current regulations, including BSEN3 and 35kV Dielectric Test (where applicable).

- Come complete with wall bracket
- 5 Year guarantee
- Internal polyethylene lining.

Fire blankets are of a durable single piece moulded design, with a large label. Fire blankets are certified to BSEN 1869.



Description	Prod Code
6 Litre Spray Water (13A)	FE14355



Description	Prod Code
9 Litre Jet Water (21A)	FE14356



Description	Prod Code
2 Kg CO2 (34B)	FE14357



Description	Prod Code
5 Kg CO2 (70B)	FE14358

Fire Extinguishers



Description	Prod Code
2 Litre Foam (8A 55B)	FE14359



Description	Prod Code
6 Litre Foam (21A 144B)	FE14360



Description	Prod Code
9 Litre Foam (27A 233B)	FE14361



Description	Prod Code
2 Litre Wet Chemical (8A 34B 25F)	FE14362



Description	Prod Code
6 Litre Wet Chemical (21A 113B 75F)	FE14362

Fire Extinguishers



Description	Prod Code
600g ABC Powder (5A 21B C)	FE14364



Description	Prod Code
900g ABC Powder (5A 34B C)	FE14365



Description	Prod Code
1Kg ABC Powder (8A 34B)	FE14366



Description	Prod Code
2Kg ABC Powder (13A 89B)	FE14367



Description	Prod Code
6Kg ABC Powder (43A 233B)	14368



Description	Prod Code
9Kg ABC Powder (55A 233B)	14369

Fire Extinguishers & Blankets



Description	Prod Code
Single Stand	FE14370



Dimenions	Prod Code
Double Stand	FE14371



Dimenions	Prod Code
Fire Blanket 1x1m	FE14373



Dimenions	Prod Code
Fire Blanket 1.2x1.2m	FE14374



Dimenions	Prod Code
Fire Blanket 1.2x1.8m	FE14375



Dimenions	Prod Code
Fire Blanket 1.8x1.8m	FE14376





W T Lynn Ltd  
Navigation Road  
Burslem  
Stoke on Trent  
ST6 3RU

Tel: 01782 834818  
Fax: 01782 825856  
Email: [sales@wtlynn.co.uk](mailto:sales@wtlynn.co.uk)

